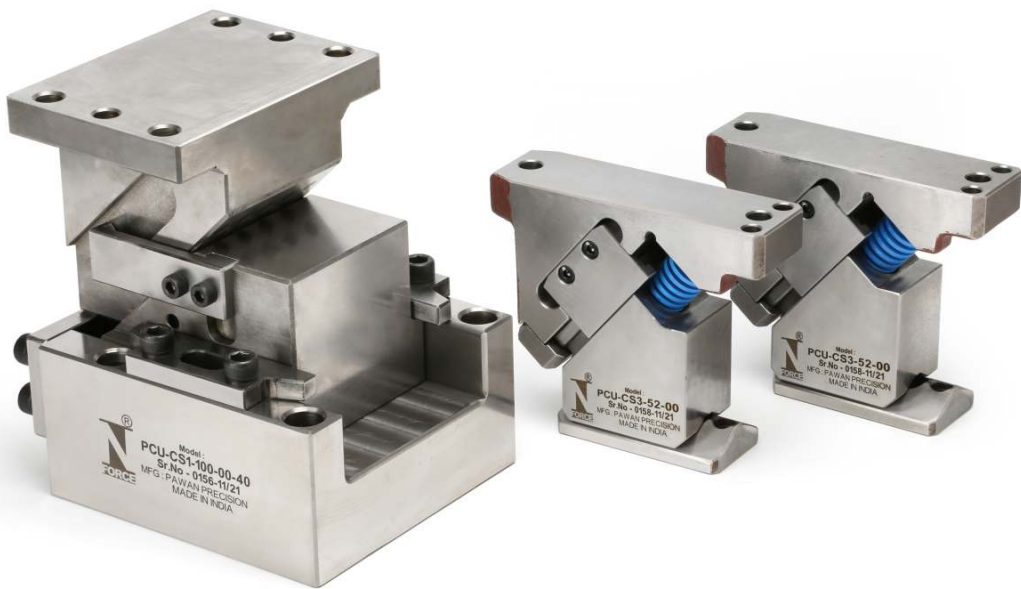
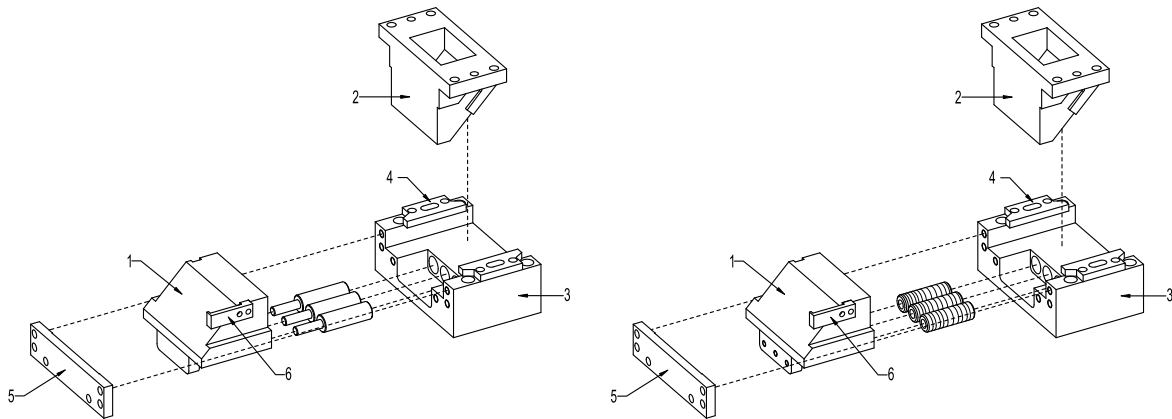


Cam Unit



► Die Mounted Cam Unit PCU-CS1



BILL OF MATERIAL

CAM CODE	SR.NO.	PART NAME	MATERIAL
CAM UNIT PCU-CS1	1	CAM SLIDER	SG600/3
	2	CAM DRIVER	SG600/3
	3	CAM HOLDER	SG600/3
	4	UPPER PLATE	En8
	5	STOPPER PLATE	En8
	6	POSITIVE RETURN FOLLOWER	En8

SPRINGS & GAS SPRINGS LIST

CAM UNIT	CODE	COIL SPRING	GAS SPRING (GS)
CS1-52-(00)	52-00-25	PSF 20X70	
	52-00-40	PSF 20X100	
	52-00-60	PSF 20X150	
CS1-65-(00)	65-00-40	PSF 22X100	
	65-00-60	PSF 22X150	
CS1-65-(5-20)	65-05-45	PSF 22X125	
	65-05-70	PSF 25X175	
	65-10-45	PSF 22X125	
	65-10-70	PSF 25X175	
	65-15-45	PSF 22X125	
	65-15-70	PSF 25X175	
	65-20-45	PSF 22X125	
	65-20-70	PSF 25X175	
	CS1-100-(00)	100-00-40	
100-00-60		PSF 27X150	
100-00-80		PSF 30X200	
CS1-100-(5-20)	100-05-45	PSF 27X125	
	100-05-70	PSF 27X175	
	100-10-45	PSF 27X125	
	100-10-70	PSF 27X175	
	100-15-45	PSF 27X125	
	100-15-70	PSF 27X175	
	100-20-45	PSF 27X125	
	100-20-70	PSF 27X175	
CS1-150-(00)	150-00-40	PSF 35X100	NFS-S6-25-50-RED
	150-00-60	PSF 35X150	
CS1-150-(5-20)	150-05-45	PSF 35X125	
	150-05-70	PSF 35X175	
	150-10-45	PSF 35X125	
	150-10-70	PSF 35X175	
	150-15-45	PSF 35X125	
	150-15-70	PSF 35X175	
	150-20-45	PSF 35X125	
	150-20-70	PSF 35X175	
CS1-200-(00)	200-00-40	PSF 35X100	NFS-S6-25-50-YELLOW
	200-00-60	PSF 35X150	
CS1-250/300-(00)	250-00-40	PSF 40X100	
	250-00-60	PSF 40X150	
	300-00-40	PSF 40X100	
	300-00-60	PSF 40X150	
CS1-400/500/600-(00)	400-00-60	PSF 60X150	
	500-00-60		
	600-00-60		

► Cam Unit - PCU-CS1-52 (00)

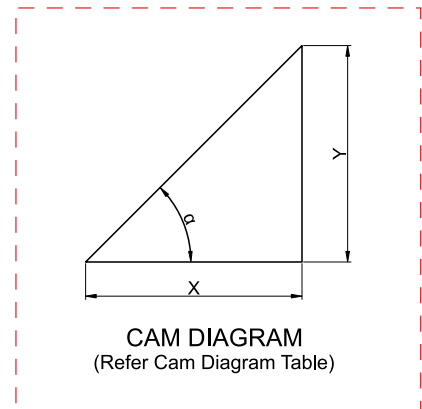
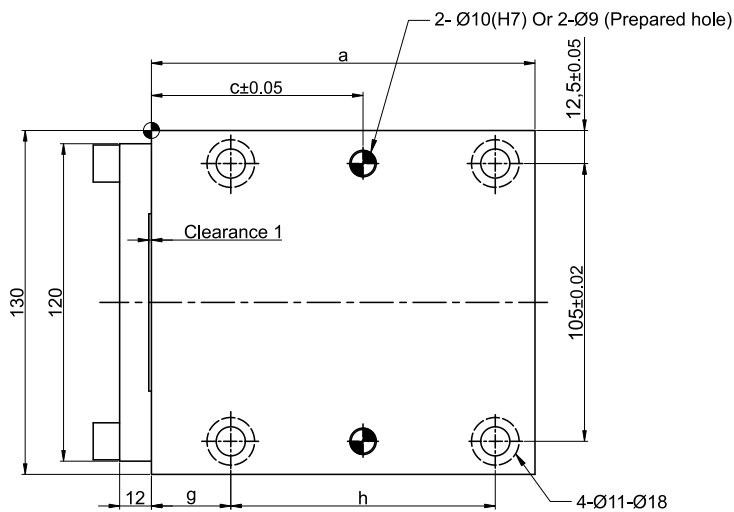
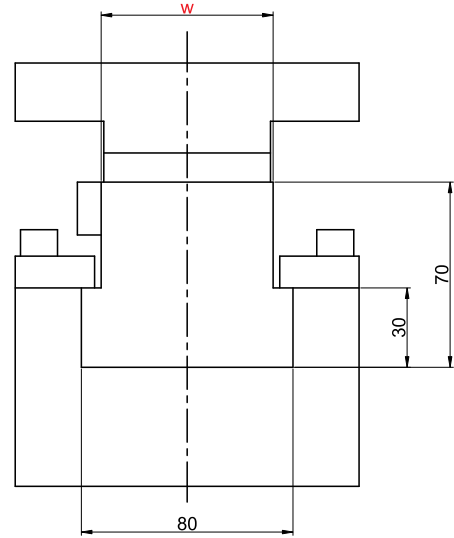
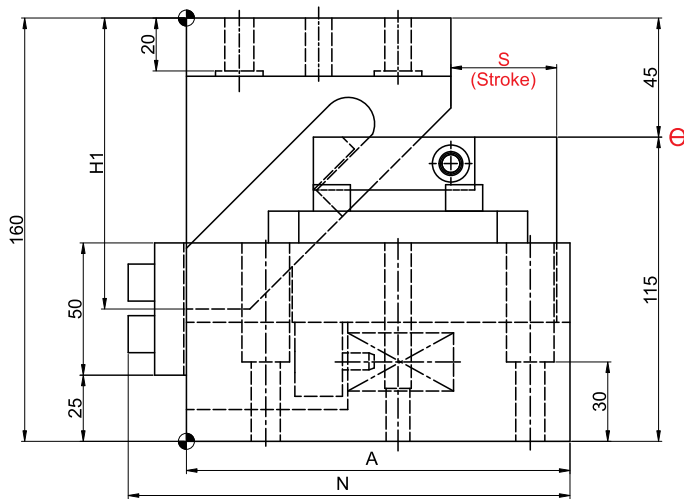
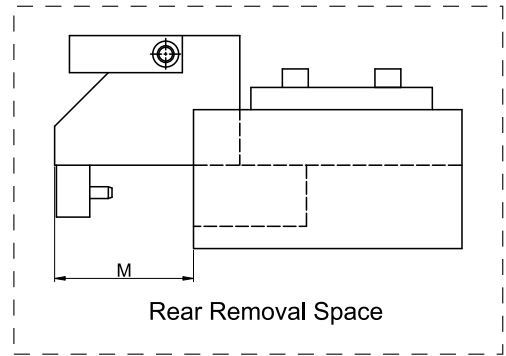
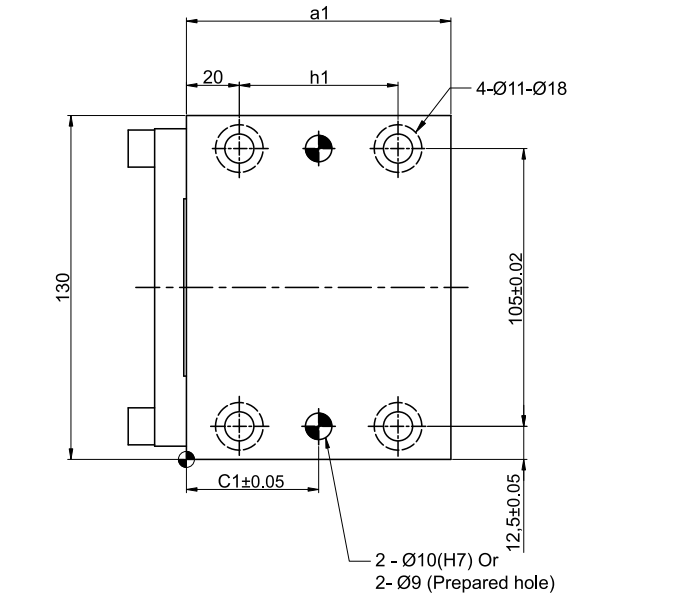
Cam Dimensions													Cam Diagram		
W	Θ	S	A	H1	N	a	a1	c	c1	h	h1	M	X	Y	α
52	00	25	120	90	140	120	80	70	40	80	40	68	25	25	45°
		40	135	100	155	135	90	80	45	95	50	58	40	40	
		60	180	120	200	180	110	55	55	140	70	60	60	60	

Spring Force										
Working force KN(tonf)		Spring load N (kgf)			Total weight kg	Catalog No.	W	Θ	Slide Stroke S	
Standard working force	Max. working force	Preload	5 mm before bottom dead centre	Max. load.						
14.7 (1.5)	29.4 (3.0)	144 (14.7)	504 (51.4)	594 (60.6)	8.0	PCU-CS1	52	00	25	
		101 (10.3)	542 (55.2)	605 (61.7)	8.0				40	
		109 (11.1)	571 (58.2)	613 (62.5)	14.0				60	

Order Type - Code-Size(W)-Θ-Stroke(S)

Example - PCU-CS1-52-00-25

► Cam Unit - PCU-CS1-65-(00)



(Refer Cam Dimension Table)

► Cam Unit - PCU-CS1-65-(00)

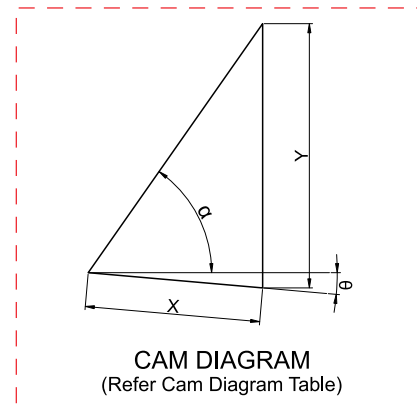
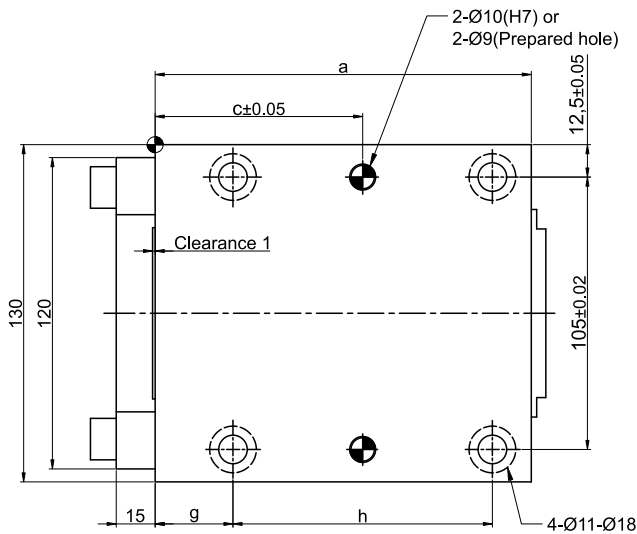
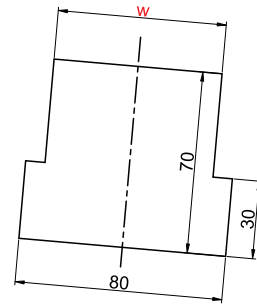
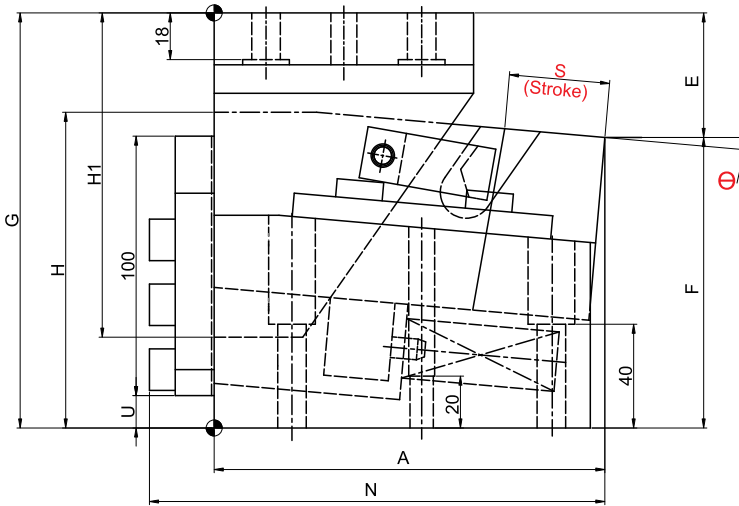
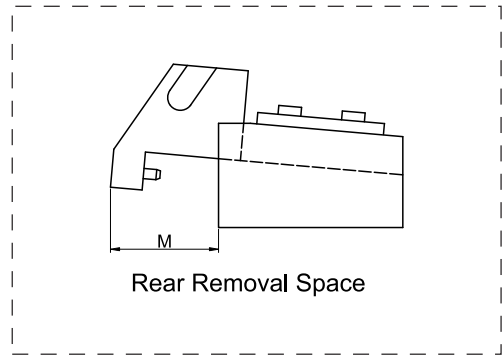
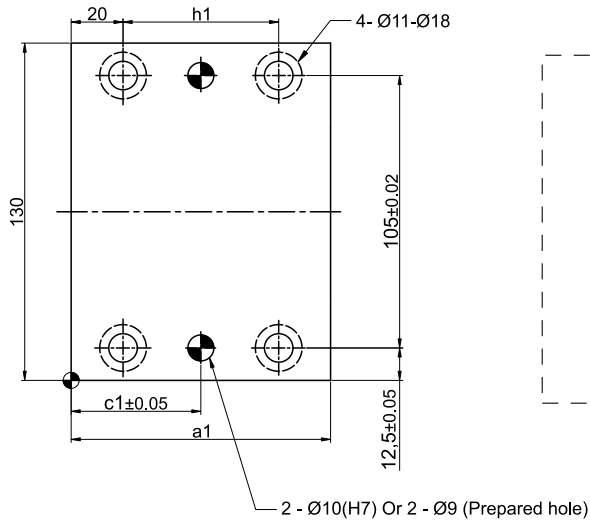
Cam Dimensions														Cam Diagram		
W	Θ	S	A	H1	N	a	a1	c	c1	g	h	h1	M	X	Y	α
65	00	40	140	110	167	145	100	80	50	30	100	60	75	40	40	45°
		60	190	130	212	180	110	105	55	40	125	70	80	60	60	

Spring Force									
Working force KN(tonf)		Spring load N (kgf)			Total weight Kg	Catalog No.	W	Θ	Slide Stroke S
Standard working force	Max. working force	Preload	5 mm before bottom dead centre	Max. load.					
19.6 (2.0)	39.2 (4.0)	125 (12.7)	671 (68.4)	749 (76.4)	19.0	PCU-CS1	65	00	40
		135 (13.8)	707 (72.1)	759 (77.4)	22.0				60

Order Type - Code-Size(W)-Θ-Stroke(S)

Example - PCU-CS1-65-00-40

► Cam Unit - PCU-CS1-65-(05-20)



(Refer Cam Dimension Table)

CAM DIAGRAM
(Refer Cam Diagram Table)

► Cam Unit - PCU-CS1-65-(05-20)

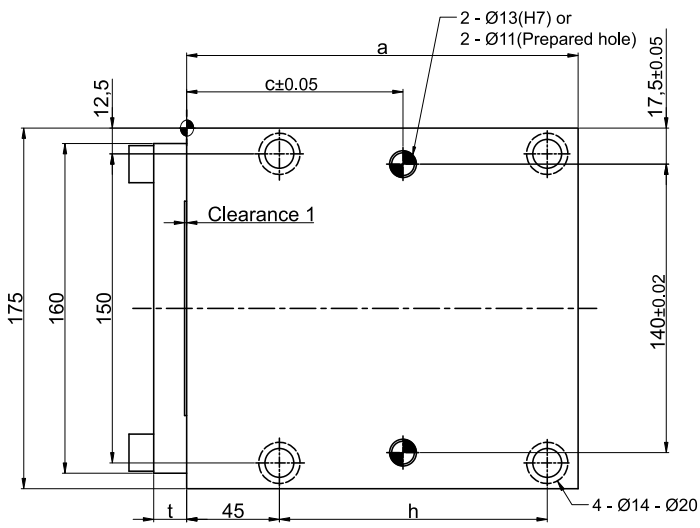
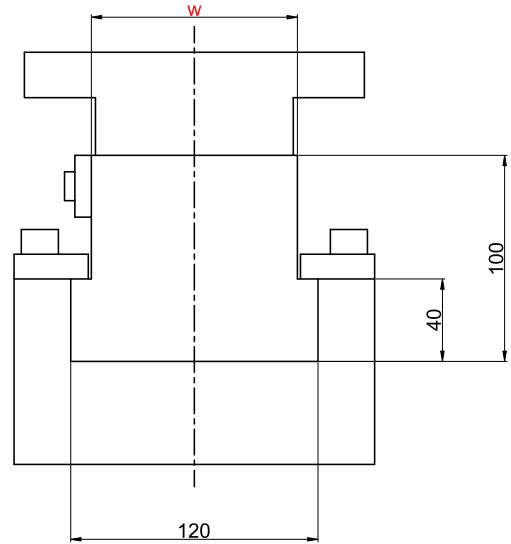
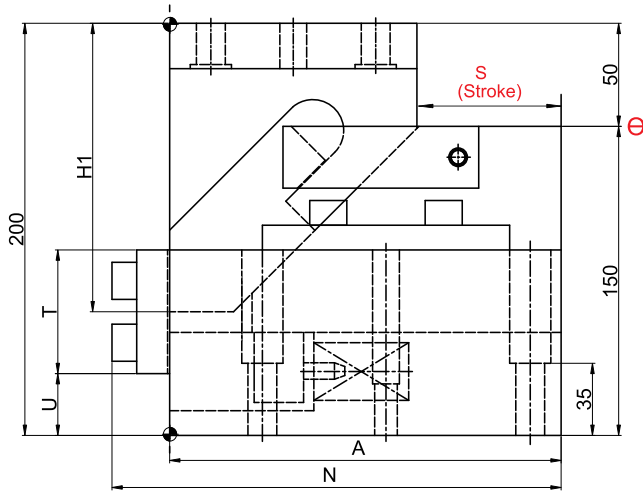
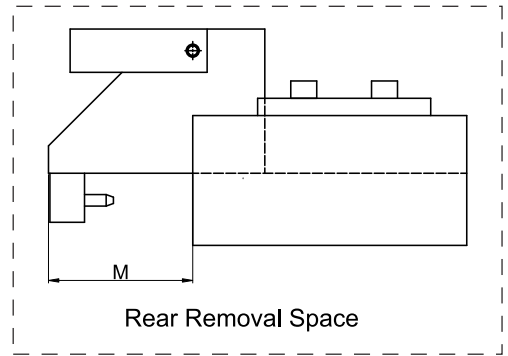
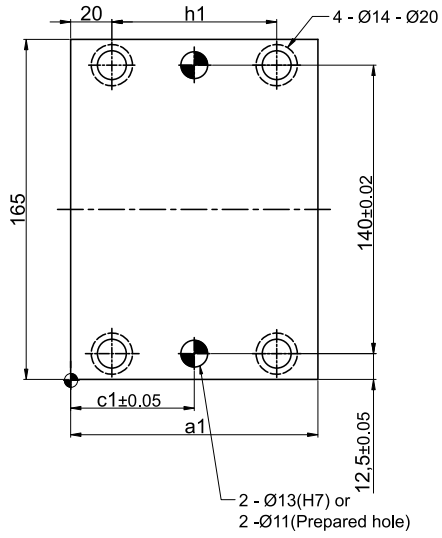
Cam Dimensions																		Cam Diagram			
W	Θ	S	A	E	F	G	H	H1	U	N	a	a1	c	c1	g	h	h1	M	X	Y	α
65	05°	45	150.55	47.90	112.10	160	121.7	125	12.5	175.55	145	100	80	50	30	100	60	85	45	67.9	55°
		70	195.38	46.83	123.17	170	158.1	145	25	220.38	180		65		40	125		83	70	105.7	
	10°	45	154.95	51.24	108.76	160	129.1	115	20	179.95	145	100	79	50	30	100	60	89	45	60.6	50°
		70	199.27	59.06	110.94	170	138.9	145	25	224.27	180		65		40	125		85	70	94.3	
	15°	45	158.18	64.91	105.09		170	133.7	115	25	183.18	145	100	80	50	30	100	60	91	45	55.1
		70	201.64	66.56	103.44	161.5		125	40	226.64	180	110		65		55	40		125	70	88
	20°	45	160.20	68.81	101.19	170	138.9	105	30	185.20	145	100	80	50	30	100	60	93	45	50.8	40°
		70	202.48	74.21	95.79		154.6	120	40	227.48	180		110		65	55		40	125	70	

Spring Force									
Working force KN(tonf)		Spring load N (kgf)			Total weight kg	Catalog No.	W	Θ	Slide Stroke S
Standard working force	Max. working force	Preload	5 mm before bottom dead centre	Max. load.					
19.6 (2.0)	39.2 (4.0)	176 (18.0)	680 (69.4)	743 (75.8)	20.0	PCU-CS1	65	05°	45
		190 (19.4)	918 (93.7)	974 (99.4)	25.0				70
		176 (18.0)	680 (69.4)	743 (75.8)	20.0			10°	45
		190 (19.4)	918 (93.7)	974 (99.4)	25.0				70
		176 (18.0)	680 (69.4)	743 (75.8)	21.0			15°	45
		190 (19.4)	918 (93.7)	974 (99.4)	25.0				70
		176 (18.0)	680 (69.4)	743 (75.8)	21.0			20°	45
		190 (19.4)	918 (93.7)	974 (99.4)	25.0				70

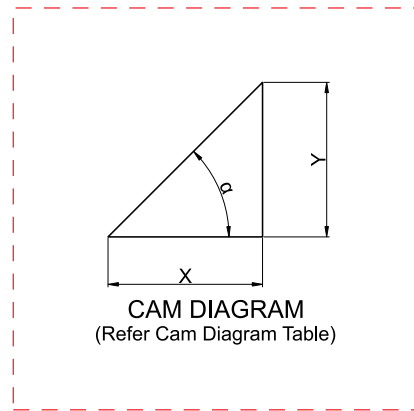
Order Type - Code-Size(W)-Θ-Stroke(S)

Example - PCU-CS1-65-05-45

► Cam Unit - PCU-CS1-100-(00)



(Refer Cam Dimension Table)



► **Cam Unit - PCU-CS1-100-(00)**

Cam Dimensions															Cam Diagram			
W	Θ	S	A	H1	N	T	U	a	a1	c	c1	h	h1	t	M	X	Y	α
100	00	40	190	140	218	60	30	190	120	105	60	130	80	16	100	40	40	45°
		60	210	160	238				140		70		100			60	60	
		80	250	170	277	115	10	220	150	135	75	160	110	15	110	80	80	

Spring Force									
Working force N(tonf)		Spring load N (kgf)			Total weight kg	Catalog No.	W	Θ	Slide Stroke S
Standard working force	Max. working force	Preload	5 mm before bottom dead centre	Max. load.					
29.4 (3.0)	58.8 (6.0)	189 (19.3)	1015 (103.5)	1133 (115.5)	37.0	PCU-CS1	100	00	40
		203 (20.7)	1061 (108.2)	1139 (116.1)	38.0				60
		170 (17.4)	1235 (126.0)	1306 (133.2)	44.0				80

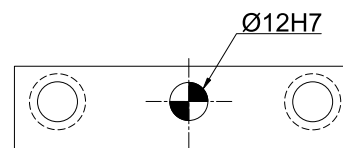
Order Type - Code-Size(W)-Θ-Stroke(S)

Example - PCU-CS1-100-00-40



Alternations-

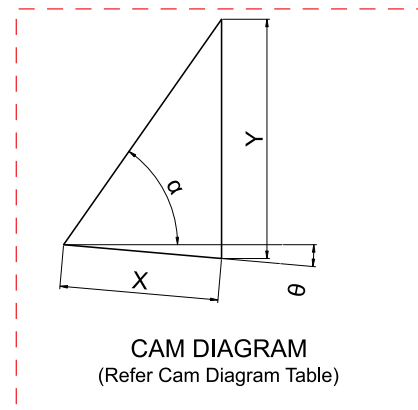
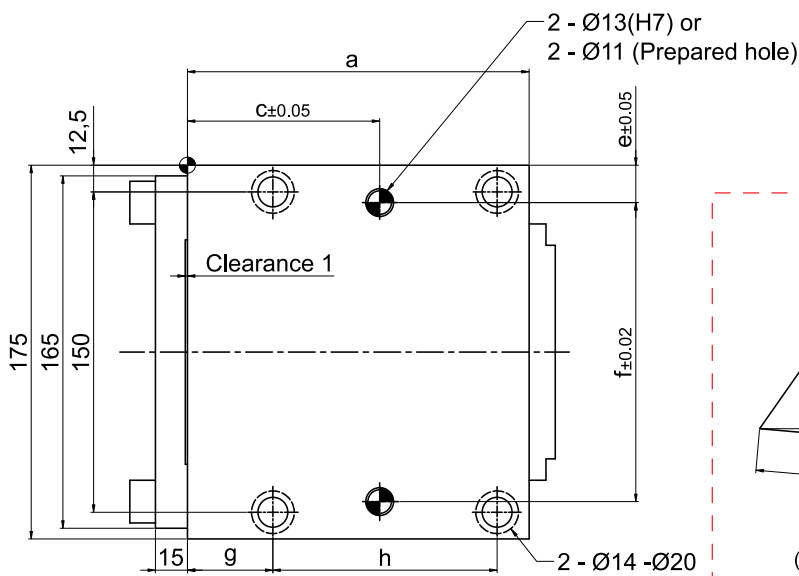
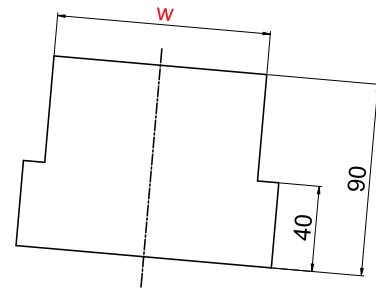
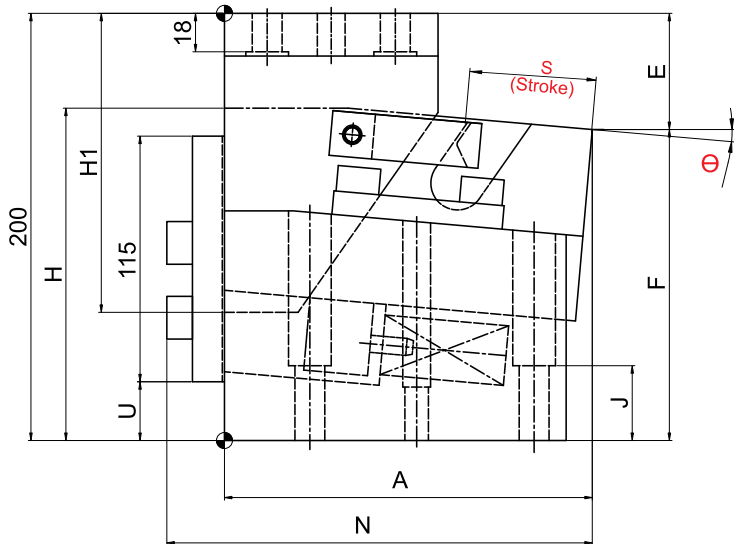
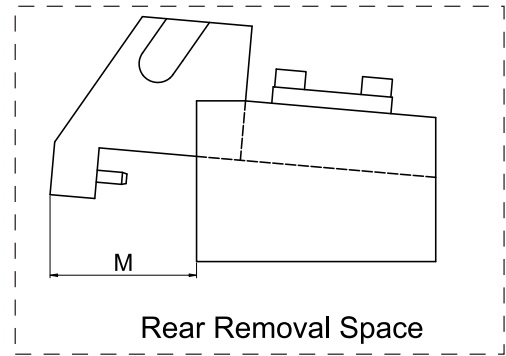
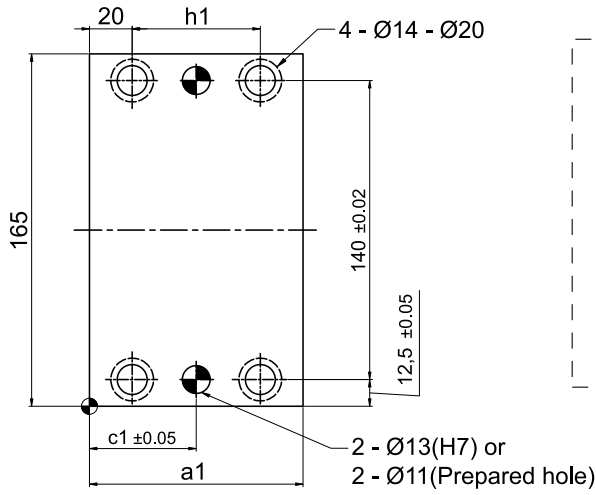
Option Code(OC)	Specifications
N12	Change dowel hole diameter Ø12H7 .



Order Type:- CODE-SIZE(W)-Θ-STROKE(S)-OC

Example:- PCU-CS1-100-00-40-N12

► Cam Unit - PCU-CS1-100-(05-20)



(Refer Cam Dimension Table)

► **Cam Unit - PCU-CS1-100-(05-20)**

Cam Dimensions																				Cam Diagram			
W	Θ	S	A	E	F	H	H1	J	N	U	a	a1	c	c1	e	f	g	h	h1	M	X	Y	α
100	05°	45	172.22	54.72	145.28	155.6	140	35	199.22	27.5	160	100	90	50	17.5	140	40	105	60	98	45	67.9	55°
		70	207.08	52.77	147.23	161.1	160	40	234.08	30	190	120	70	60	12.5	150	45	130	80	90	70	105.7	
	10°	45	178.12	65.02	134.98	156.8	140	35	205.12		40	160	100	90	50	17.5	140	40	105	60	103	45	60.6
		70	212.59	66.10	133.90	161.6	160	40	239.59	190		120	70	60	12.5	150	45	130	80	95	70	94.3	
	15°	45	182.67	70.77	129.23	160	125	40	209.67	32.5	160	100	90	55	17.5	140	40	105	70	106	45	55.1	45°
		70	216.48	69.83	130.17	171.5	130		40	243.48	35	190	130	70	65	12.5	150	45	130	90	98	70	
	20°	45	185.83	81.86	118.14	161.2	120	40	212.83	45		160	100	90	55	17.5	140	40	105	70	109	45	50.8
		70	218.72	78.83	121.17	179.5	130		40		245.72	190	130	70	65	12.5	150	45	130	90	98	70	79.1

Spring Force									
Working force KN(tonf)		Spring load N (kgf)			Total weight Kg	Catalog No.	W	Θ	Slide Stroke S
Standard working force	Max. working force	Preload	5 mm before bottom dead centre	Max. load.					
39.2 (4.0)	78.5 (8.0)	263 (26.8)	1015 (103.5)	1109 (113.1)	33.0	PCU-CS1	100	05°	45
		194 (19.8)	1065 (108.6)	1132 (115.5)	38.0				70
		263 (26.8)	1015 (103.5)	1109 (113.1)	33.0			10°	45
		194 (19.8)	1065 (108.6)	1132 (115.5)	38.0				70
		263 (26.8)	1015 (103.5)	1109 (113.1)	33.0			15°	45
		194 (19.8)	1065 (108.6)	1132 (115.5)	38.0				70
		263 (26.8)	1015 (103.5)	1109 (113.1)	32.0			20°	45
		194 (19.8)	1065 (108.6)	1132 (115.5)	39.0				70

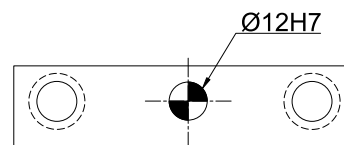
Order Type - Code-Size(W)-Θ-Stroke(S)

Example - PCU-CS1-100-05-45



Alternations-

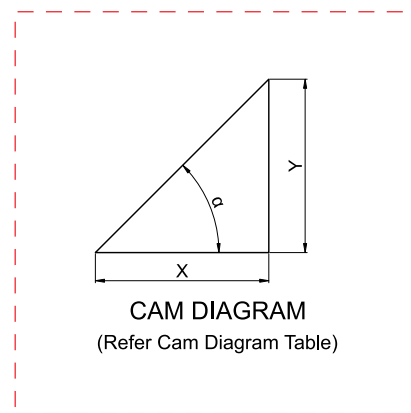
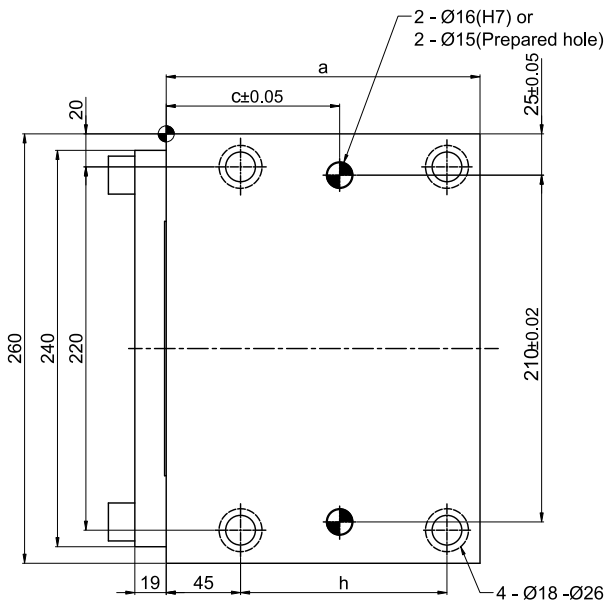
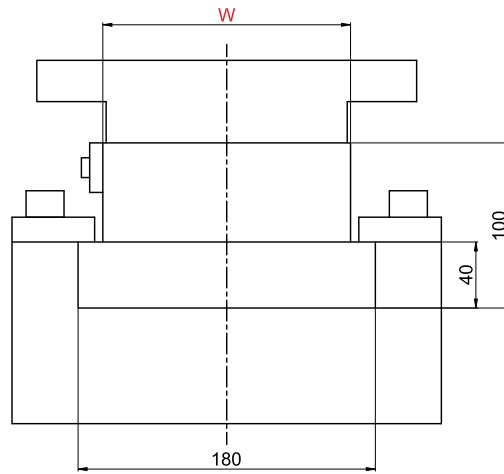
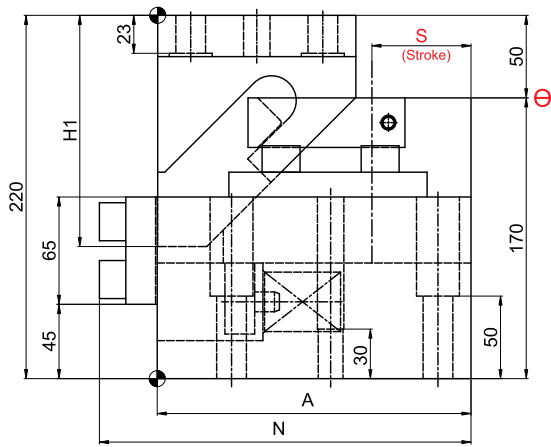
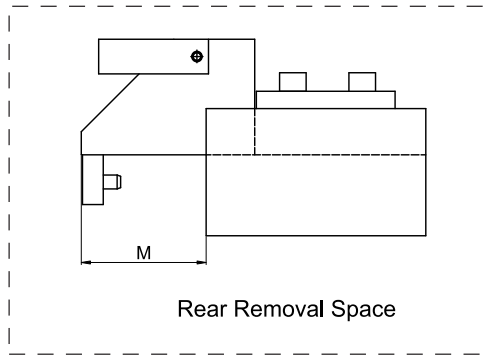
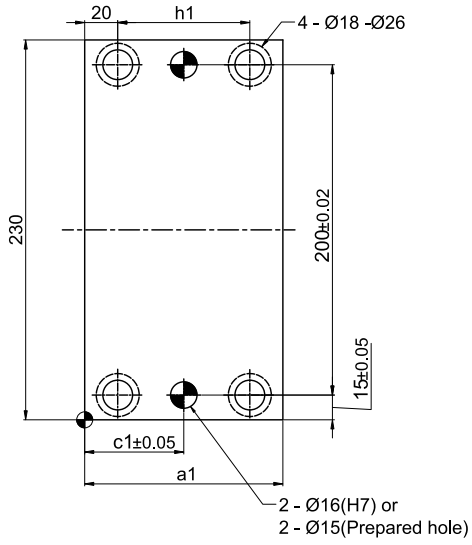
Option Code(OC)	Specifications
N12	Change dowel hole diameter Ø12H7.



Order Type:- CODE-SIZE(W)-Θ-STROKE(S)-OC

Example:- PCU-CS1-100-05-45-N12

► Cam Unit - PCU-CS1-150-(00)



(Refer Cam Dimension Table)

▶ Cam Unit - PCU-CS1-150-(00)

Cam Dimensions													Cam Diagram		
W	Θ	S	A	H1	N	a	a1	c	c1	h	h1	M	X	Y	α
150	00	40	190	140	225	190	120	105	60	125	80	108	40	40	45°
		60	210	160	245	200	140	110	70	135	100	100	60	60	

Spring Force									
Working force KN(tonf)		Spring load N (kgf)			Total weight kg	Catalog No.	W	Θ	Slide Stroke S
Standard working force	Max. working force	Preload	5 mm before bottom dead centre	Max. load.					
58.8 (6.0)	88.3 (9.0)	307 (31.3)	1651 (168.4)	1843 (188.0)	63.0	PCU-CS1	150	00	40
		333 (33.9)	1741 (177.5)	1869 (190.6)	69.0				60

Order Type - Code-Size(W)-Θ-Stroke(S)

Example - PCU-CS1-150-00-40



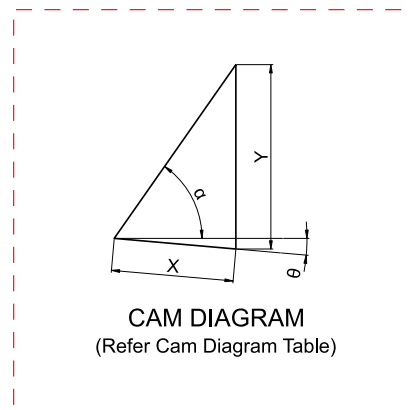
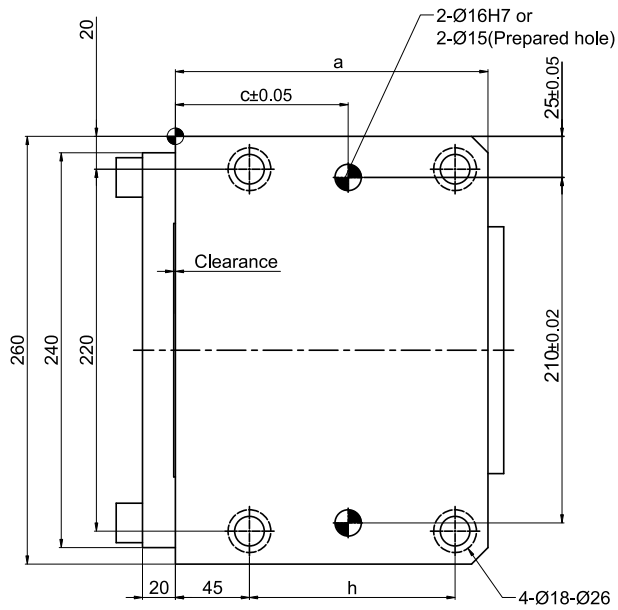
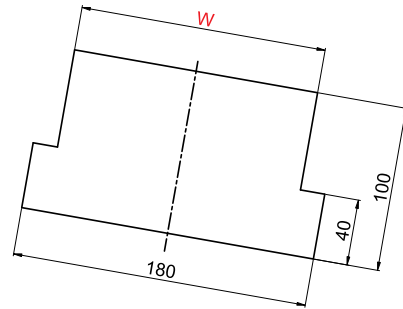
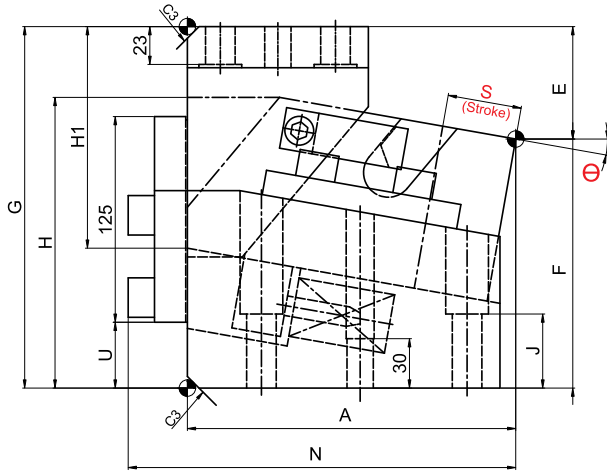
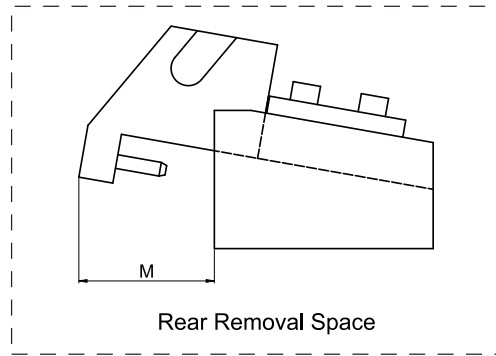
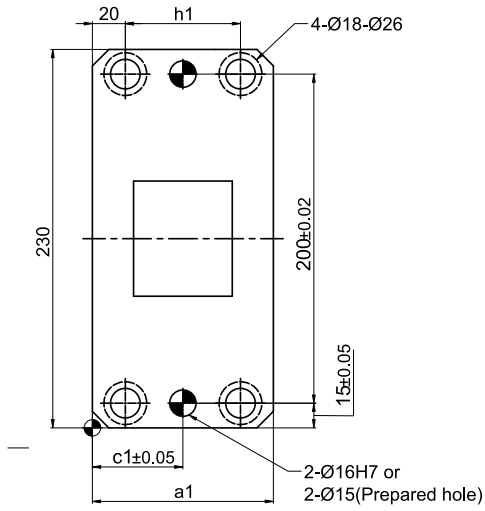
Alternations-

Option Code(OC)	Specifications
GS	Cam with Gas Spring NFS-S6-25-50-RED (only applicable for CS1-150-00-40)

Order Type:- CODE-SIZE(W)-Θ-STROKE(S)-OC

Example:- PCU-CS1-150-00-40-GS

► Cam Unit - PCU-CS1-150-(05-20)



CAM DIAGRAM
(Refer Cam Diagram Table)

(Refer Cam Dimension Table)

► **Cam Unit - PCU-CS1-150-(05-20)**

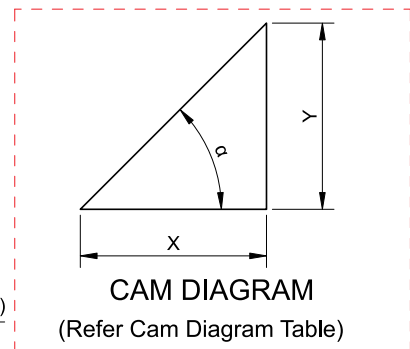
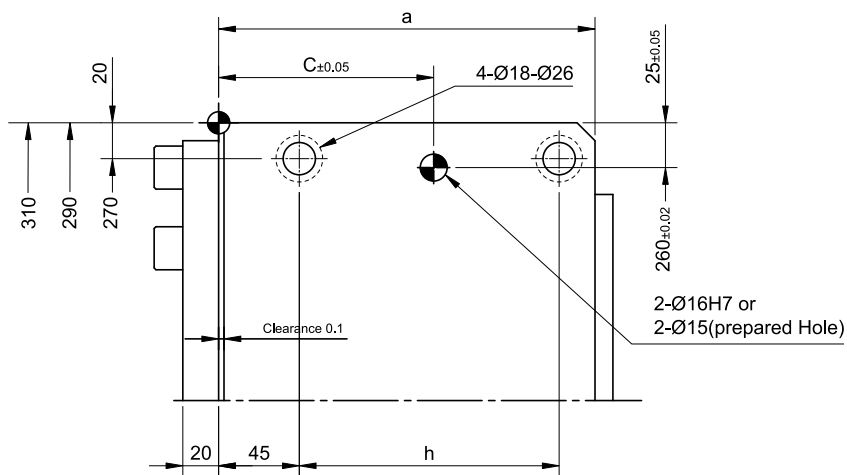
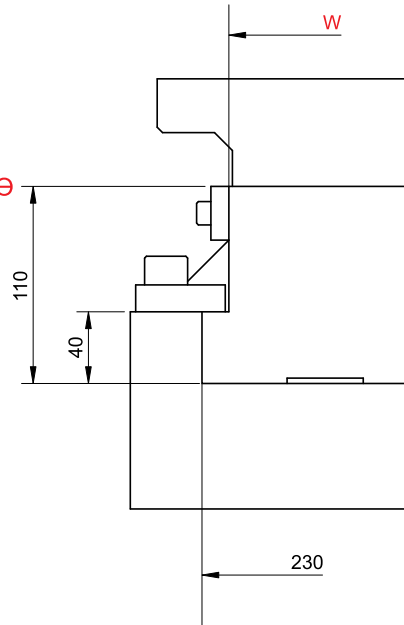
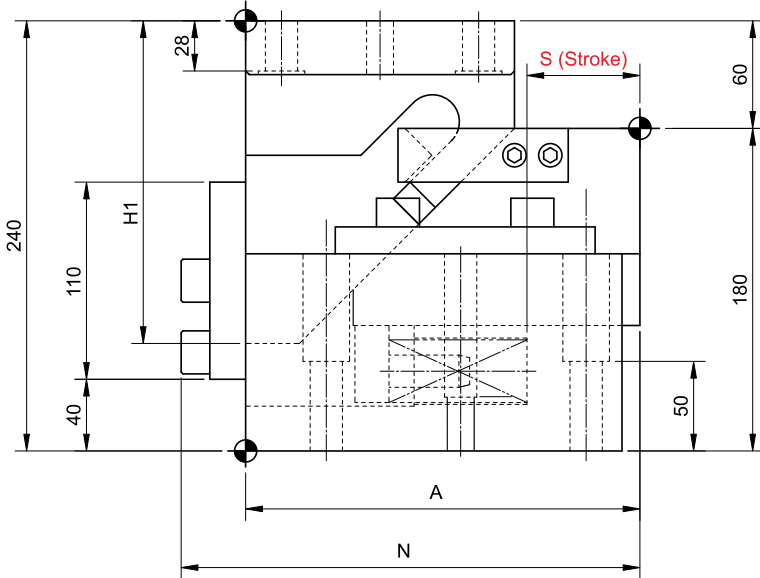
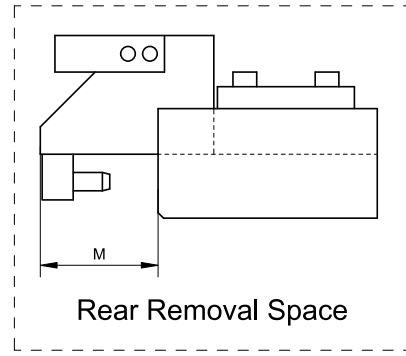
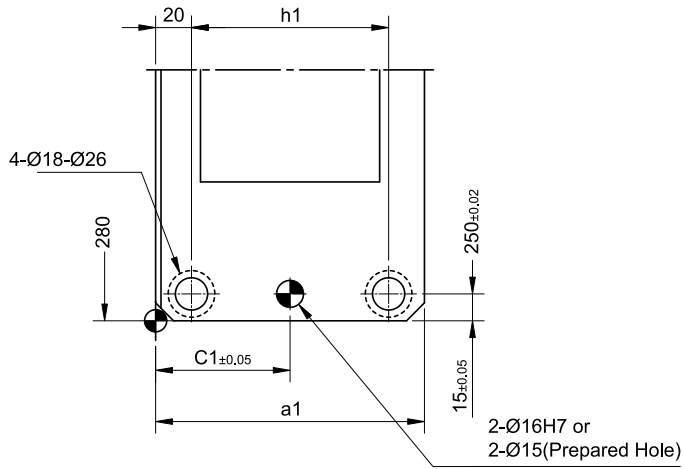
Cam Dimension																			Cam Diagram			
W	Θ	S	A	E	F	G	H	H1	J	N	U	a	a1	c	c1	h	h1	M	X	Y	α	
150	05°	45	193.01	61.50	158.50	220	170.2	145	35	229.01	30	190	110	105	55	125	70	115	45	67.9	55°	
		70	217.92	53.68	166.32		180.6	170	253.92	200		130	120	65	135	90	103	70	105.7			
	10°	45	199.55	68.64	151.36	220	176.7	140	45	235.55	40	190	110	105	55	125	70	121	45	60.6	50°	
		70	224.17	67.98	152.02		180.5	170		260.17		200	130	120	65	135	90	110	70	94.3		
	15°	45	204.58	76.29	143.71	230	179.6	130	60	240.58	55	190	120	105	60	125	80	126	45	55.1	45°	
		70	228.73	77.76	152.24		194.6	155		264.73		200	140	120	70	135	100	111	70	85.7		
	20°	45	208.05	84.30	135.70	220	183.2	130	45	244.05	40	190	120	105	60	125	80	113	45	50.8	40°	
		70	231.54	92.85	137.15		193.2	155		267.54		200	140	120	70	135	100		70	79.1		

Spring Force										
Working force KN(tonf)		Spring load N (kgf)			Total weight kg	Catalog No.	W	Θ	Slide Stroke S	
Standard working force	Max. working force	Preload	5 mm before bottom dead centre	Max. load.						
64.7 (6.6)	98.1 (10.0)	431 (44.0)	1663 (169.6)	1817 (185.3)	62.0	PCU-CS1	150	05°	45	
		305 (31.4)	1738 (177.2)	1848 (188.4)	73.0				70	
		431 (44.0)	1663 (169.6)	1817 (185.3)	63.0			10°	45	
		305 (31.4)	1738 (177.2)	1848 (188.4)	73.0				70	
		431 (44.0)	1663 (169.6)	1817 (185.3)	65.0			15°	45	
		305 (31.4)	1738 (177.2)	1848 (188.4)	77.0				70	
		431 (44.0)	1663 (169.6)	1817 (185.3)	66.0			20°	45	
		305 (31.4)	1738 (177.2)	1848 (188.4)	75.0				70	

Order Type - Code-Size(W)-Θ-Stroke(S)

Example - PCU-CS1-150-05-45

► Cam Unit - PCU-CS1-200-(00)



(Refer Cam Dimension Table)

▶ Cam Unit - PCU-CS1-200-(00)

Cam Dimensions													Cam Diagram		
W	Θ	S	A	H1	N	a	a1	c	c1	h	h1	M	X	Y	α
200	00	40	200	160	236	200	130	110	65	135	90	125	40	40	45°
		60	220	180	256	210	150	120	75	145	110	115	60	60	

Spring Force										
Working force KN (tonf)		Spring load N (kgf)			Total weight kg	catalog No.	W	Θ	Slide Stroke S	
Standard working force	Max. working force	Preload	5 mm before bottom dead centre	Max. load.						
78.5(8.0)	117.7(12.0)	461(47.0)	2477(252.6)	2765(281.9)	82.0	PCU-CS1	200	00	40	
		499(50.9)	2611(266.3)	2803(285.8)	84.0				60	

Order Type - Code-Size(W)-Θ-Stroke(S)

Example - PCU-CS1-200-00-40



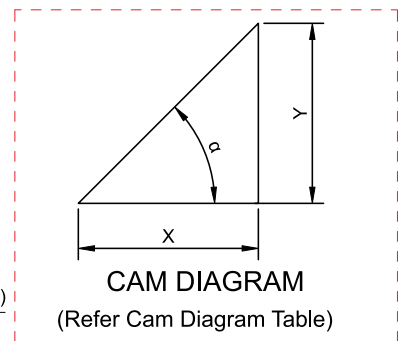
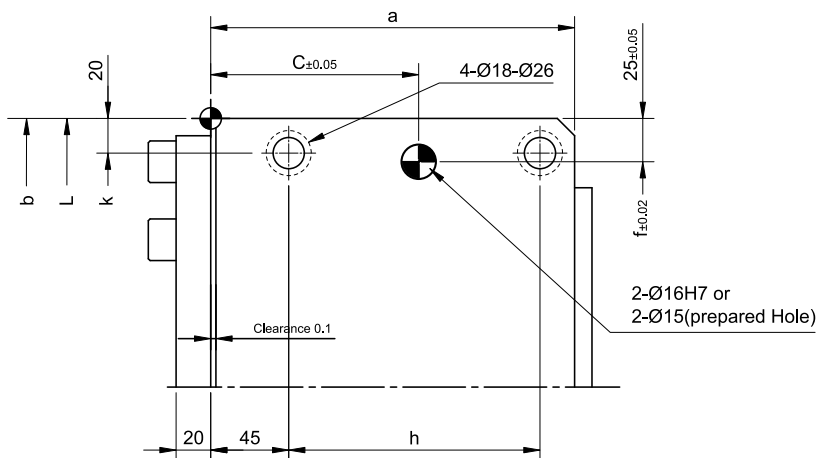
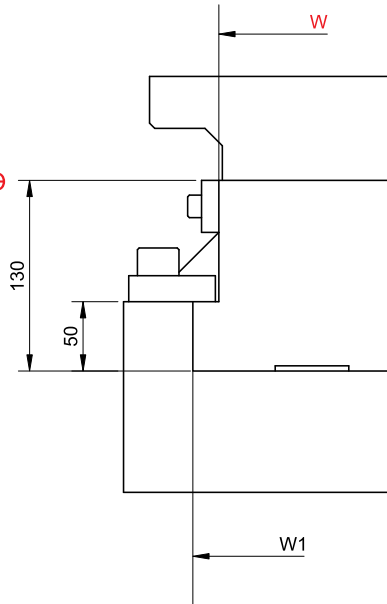
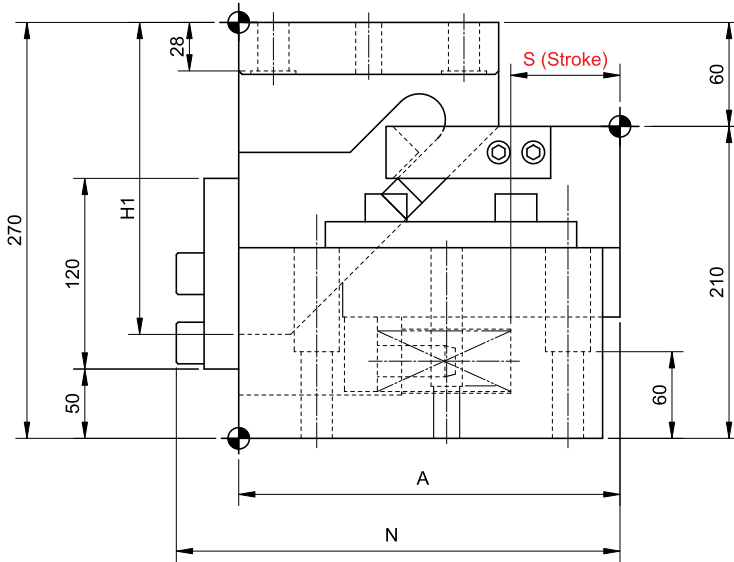
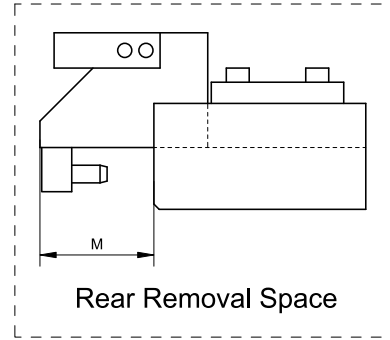
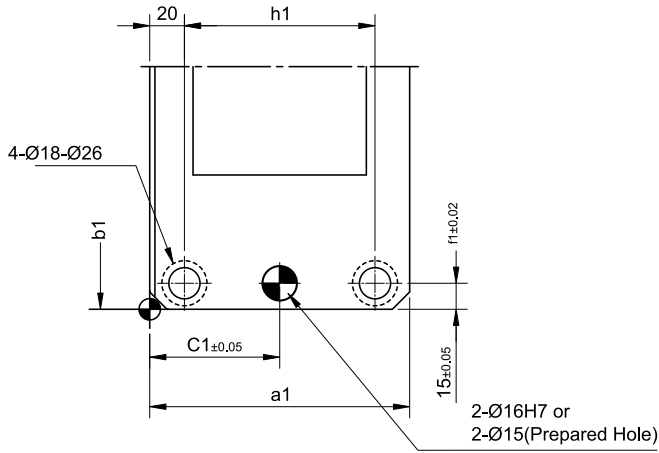
Alternations-

Option Code(OC)	Specifications
GS	Cam with Gas Spring NFS-S6-25-50-YELLOW (only applicable for CS1-200-00-40)

Order Type:- CODE-SIZE(W)-Θ-STROKE(S)-OC

Example:- PCU-CS1-200-00-40-GS

► Cam Unit - PCU-CS1-250/300-(00)



(Refer Cam Dimension Table)

▶ Cam Unit - PCU-CS1-250/300-(00)

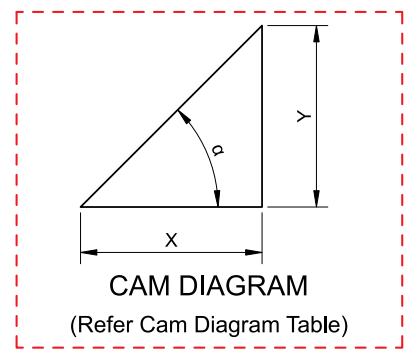
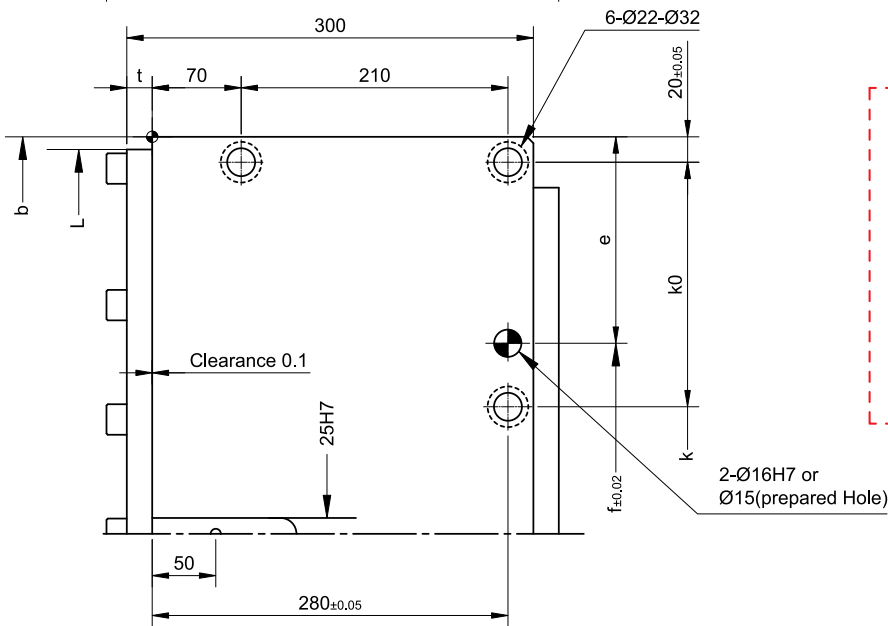
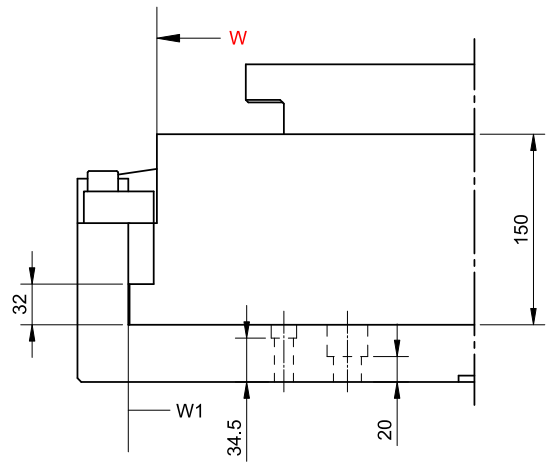
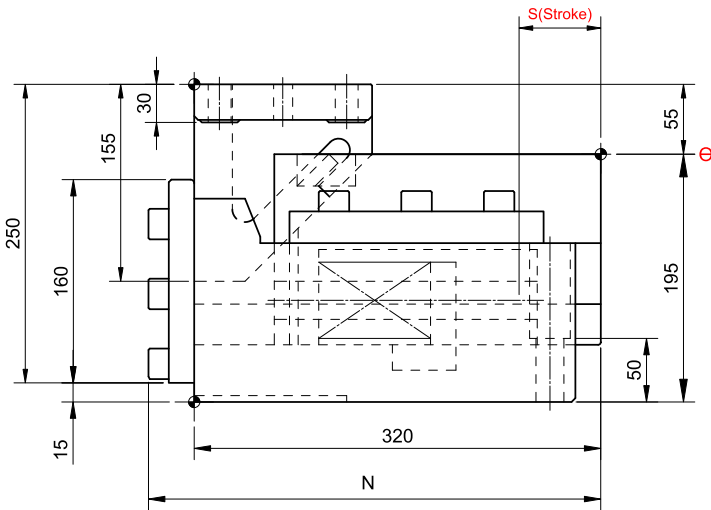
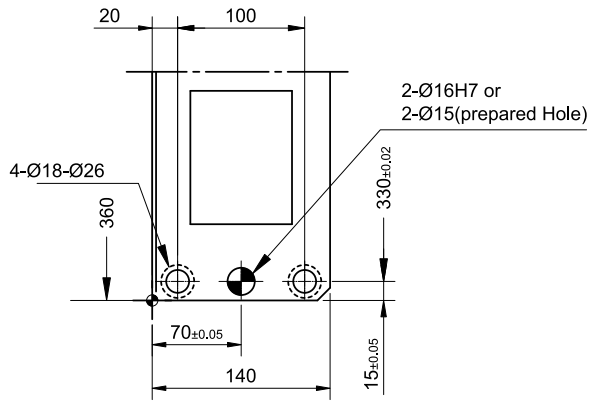
Cam Dimensions																			Cam Diagram			
W	Θ	S	A	H1	N	W1	a	a1	b	b1	c	c1	f	f1	h	h1	k	L	M	X	Y	α
250	00	40	210	170	246	280	200	140	360	330	105	70	310	300	135	100	320	340	135	40	40	45°
		60	230	190	266		220	160			125	80			155	120			115	60	60	
300		40	210	170	246	330	200	140	410	380	105	70	360	350	135	100	370	390	135	40	40	
		60	230	190	266		220	160			125	80			155	120			115	60	60	

Spring Force									
Working force KN(tonf)			Spring load N (kgf)		Total weight kg	catalog No.	W	Θ	Slide Stroke S
Standard working force	Max. working force	Preload	5 mm before bottom dead centre	Max. load.					
98.1(10.0)	147.1(15.0)	602(61.4)	3238(330.2)	3614(368.6)	106.0	PCU-CS1	250	00	40
		651(66.4)	3407(347.4)	3657(372.9)	127.0				60
117.7(12.0)	176.5(18.0)	602(61.4)	3238(330.2)	3614(368.6)	106.0		300		40
		651(66.4)	3407(347.4)	3657(372.9)	128.0				60

Order Type - Code-Size(W)-Θ-Stroke(S)

Example - PCU-CS1-250-00-40

► Cam Unit - PCU-CS1-400/500/600(00)



(Refer Cam Dimension Table)

▶ Cam Unit - PCU-CS1-400/500/600(00)

Cam Dimensions												Cam Diagram		
W	Θ	S	N	W1	b	e	f	k	KO	l	t	X	Y	α
400	00	60	356	435	525	112.5	300	200	142.5	505	20	60	60	45°
500			361	535	625	162.5			192.5	605	25			
600			635	725	400	300	705							

Spring Force									
Working force KN(tonf)			Spring load N (kgf)		Total weight kg	catalog No.	W	Θ	Slide Stroke S
Standard working force	Max. working force	Preload	5 mm before bottom dead centre	Max. load.					
137.3(14.0)	205.9(21.0)	301.0(30.7)	8573(874.2)	9325(950.9)	203.0	PCU-CS1	400	00	60
					237.0		500		
					279.0		600		

Order Type - Code-Size(W)-Θ-Stroke(S)

Example - PCU-CS1-400-00-60



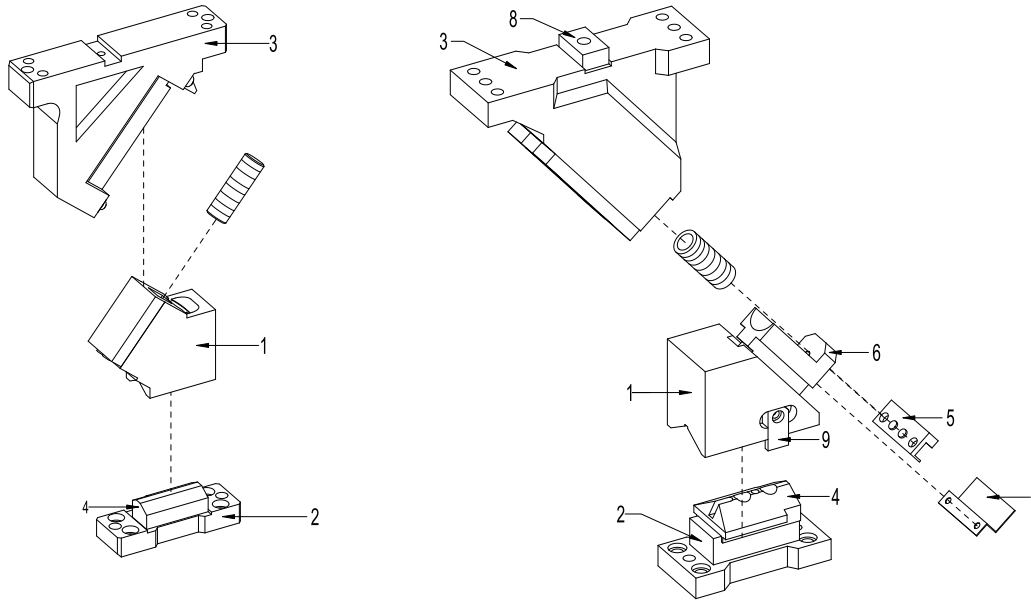
Alternations-

Option Code(OC)	Specifications
K	Dedicated key is attached. (It is not assembled to the main unit))

Order Type - Code-Size(W)-Θ-Stroke(S)-OC

Example - PCU-CS1-400-00-60-K

► Arial Cam Unit for Piercing-PCU-CS2



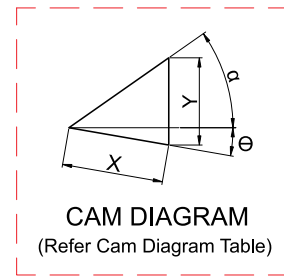
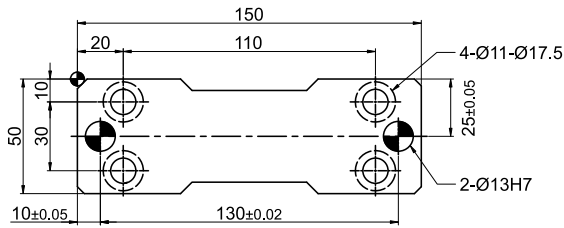
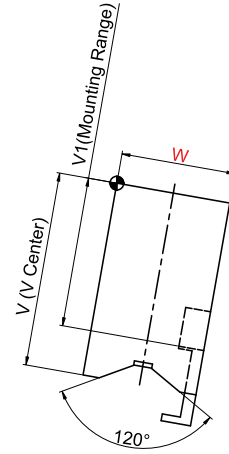
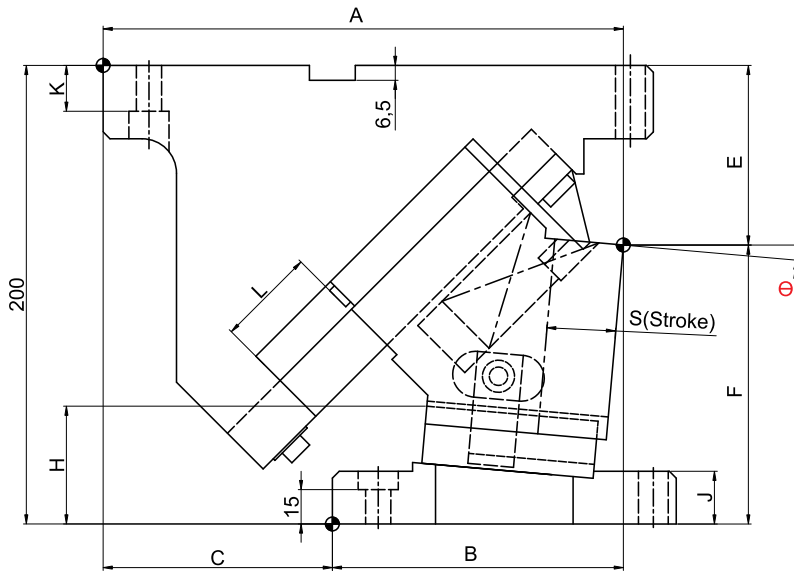
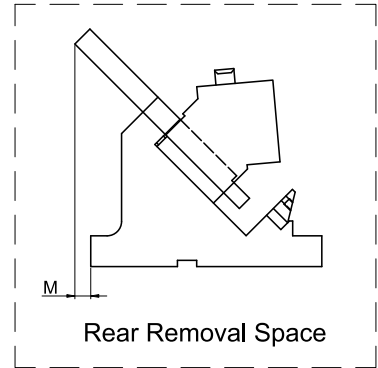
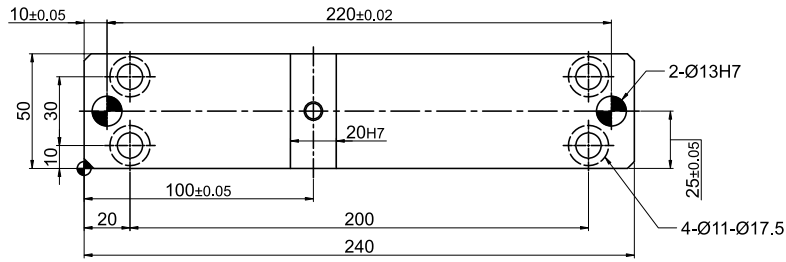
BILL OF MATERIAL

CAM CODE	SR.NO	PART NAME	MATERIAL
CAM UNIT PCU-CS2	1	CAM SLIDER	SG600/3
	2	CAM DRIVER	SG600/3
	3	CAM HOLDER	SG600/3
	4	CAM SLIDE GUIDE	BRONZE
	5	STOPPER PLATE	En8
	6	SPRING GUIDE BLOCK	En8
	7	SAFETY PLATE	MS
	8	KEY	En8
	9	POSITIVE RETURN FOLLOWER	En8

SPRINGS & GAS SPRINGS LIST

CAM UNIT	CODE	COIL SPRING	GAS SPRING (GS)	CAM UNIT	CODE	COIL SPRING	GAS SPRING (GS)	CAM UNIT	CODE	COIL SPRING	GAS SPRING(GS)
CS2-50- (00-50)	50-00	PSL 27X125	-	CS2-65- (00-45)	65-25	PSM 25X80	-	CS2-80- (00-55)	80-50	PSL 35X150	-
	50-05				65-30				80-55		
	50-10				65-35			80-60			
	50-15	65-40			80-65						
	50-20	65-45			80-70						
	50-25	PSL 27X100		CS2-65- (50-70)	65-50	PSM 25X80		CS2-150- (00-55)	150-00	PSL 60X150	
	50-30				65-55				150-05		
	50-35				65-60				150-10		
	50-40				65-65				150-15		
	50-45				65-70				150-20		
50-50	PSL 27X90	CS2-80- (00-55)	80-00	PSL 35X150	150-25						
50-55			80-05		150-30						
50-60			80-10		150-35						
50-65			80-15		150-40						
50-70			80-20		150-45						
CS2-50- (55-70)	55-00	PSL 27X90	-	CS2-80- (60-70)	80-25	PSL 35X150	-	CS2-150- (60-70)	150-50	PSL 60X150	
	55-05				80-30				150-55		
	55-10				80-35				150-60		
	55-15				80-40				150-65		
CS2-65- (00-45)	65-00	PSM 25X90	-	CS2-80- (60-70)	80-45	PSL 35X150	-	CS2-150- (60-70)	150-70	PSL 60X150	
	65-05				80-50				150-75		
	65-10				80-55				150-80		
	65-15				80-60				150-85		
	65-20				80-65				150-90		

► Cam Unit - PCU-CS2-50-(00-50)



(Refer Cam Dimension Table)

► **Cam Unit - PCU-CS2-50-(00-50)**

Cam Dimension														Cam Diagram		
W	Θ	A	B	C	E	F	H	J	K	L	V	V1	M	X	Y	α
50	00°	225.00	118.00	107	77.50	122.50	45.0	23	20	47	75	75	0	30.2	36	50°
	05°	226.91	126.91	100	78.33	121.67	51.4			43				30.5	33.1	45°
	10°	223.72	133.72	90	79.93	120.07	57.6			39				30.3	30.3	40°
	15°	224.36	139.36	85	82.29	117.71	63.6			36				30.5	28.6	35°
	20°	220.76	150.76	70	85.39	114.61	69.1			33				30.4	26.9	30°
	25°	215.85	157.85	58	89.22	110.78	74.4	21		30				30	25.4	25°
	30°	213.58	158.58	55	94.73	105.27	78.2							32.6	26.5	20°
	35°	204.89	169.89	35	96.90	103.10	85.5							35.4	28.1	15°
	40°	206.72	176.72	30	102.69	97.31	89.4							38.6	30	10°
	45°	202.01	182.01	20	103.06	96.94	98.7							42.3	32.5	5°
50°	195.73	185.73	10	105.94	94.06	105.5		46.7	35.8	0°						

Slide stroke S	Spring Force								
	Working force KN (tonf)		Spring Load N(kgf)			Total weight kg	Catalog No.	w	Θ
	Standard Working force	Max. working force	Preload	5mm before bottom dead center	Max. load				
30.2	19.6(2.0)	39.2(4.0)	59(6.0)	827(84.3)	980(99.9)	12.7	PCU-CS2	50	00°
30.5			137(14.0)	843(85.9)		12.3			05°
30.3			216(22.0)	855(87.1)		11.8			10°
30.5			98(10.0)	835(85.2)		11.8			15°
30.4			172(17.5)	848(86.4)		11.5			20°
30			163(16.6)	979(99.9)	843(86.0)	11.3			25°
32.6					854(87.1)	11.1			30°
35.4					865(88.2)	10.9			35°
38.6					873(89.0)	10.9			40°
42.3					884(90.1)	10.6			45°
46.7			892(91.0)	10.6	50°				

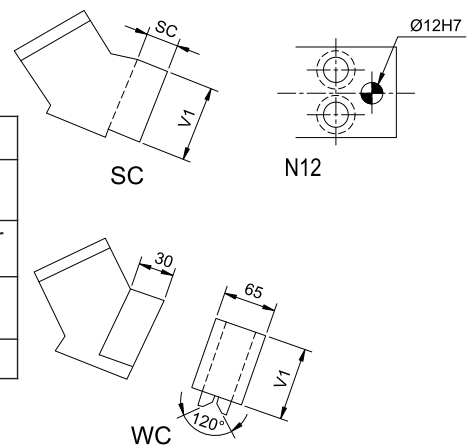
Order Type - Code-Size(W)-Θ
Example - PCU-CS2-50-00



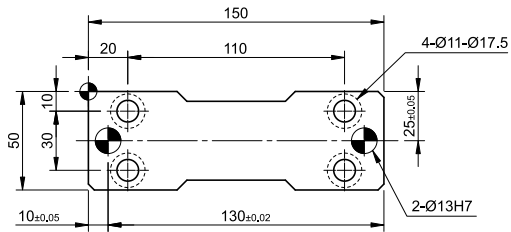
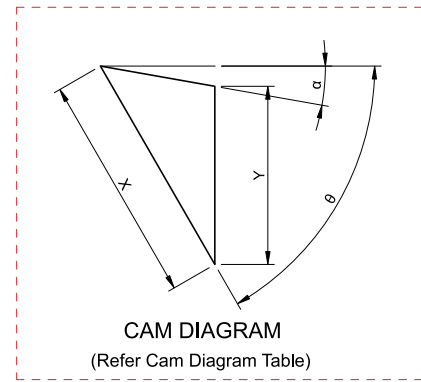
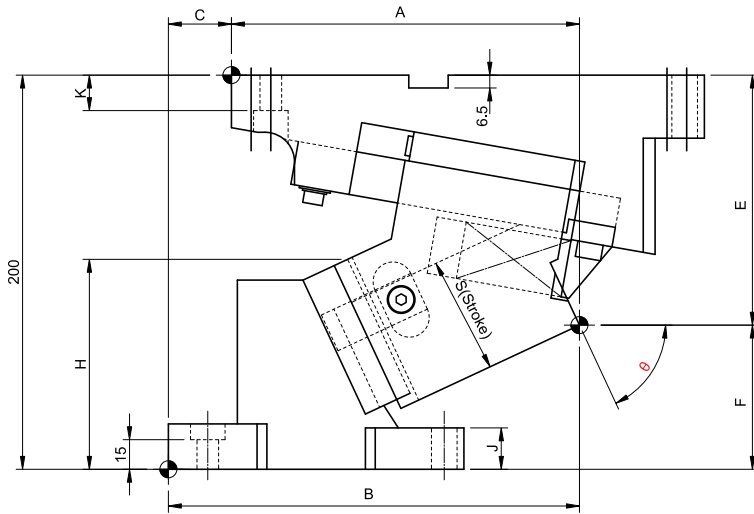
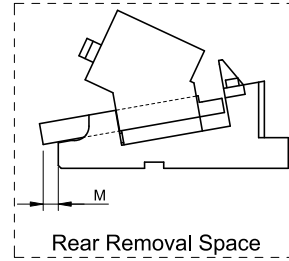
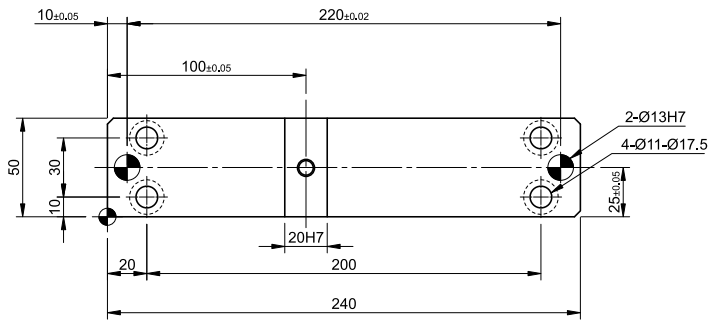
Alternations -

Option Code(OC)	Specifications
K	Dedicated key is Attached.(it is not assembled to the main unit)
N12	The Dowel Pin holes for the cam holder and cam driver are changed to ø12H7
SC	The mount surface is extended forward in the range of 1 to 60 mm (in the increments of 1 mm)
WC	The mount width is changed to 65.

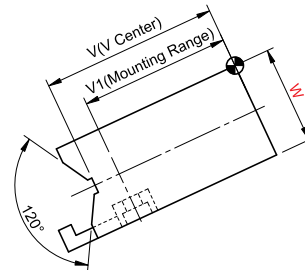
Order Type:- CODE-SIZE(W)-Θ-OC
Example:- PCU-CS2-50-00-K



► Cam Unit - PCU-CS2-50-(55-70)



(Refer Cam Dimension Table)



► **Cam Unit - PCU-CS2-50-(55-70)**

Cam Dimension														Cam Diagram						
W	Θ	A	B	C	E	F	H	J	K	L	V	V1	M	X	Y	α				
50	55°	189.83	189.83	0	116.3	83.7	104.8	21	20	30	75	65	0	52.1	40.1	5°				
	60°	179.27	194.27	15	125.08	74.92	105.5		18					25	90		75	3	59.1	46
	65°	176.60	208.6	32	126.87	73.13	106.5			20	92	75	3						58.3	48.5
	70°	177.00	215	38	135.83	64.17	107												57.6	50.6

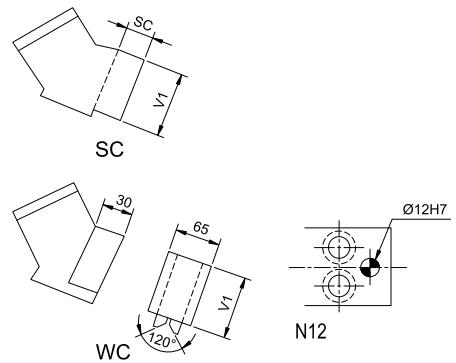
Spring Force									
Slide stroke S	Working force KN (tonf)		Spring load N (kgf)			Total weight kg	Catalog No.	W	Θ
	Standard Working force	Max. working force	Preload	5mm before bottom dead center	Max. load				
52.1	19.6(2.0)	39.2(4.0)	163(16.6)	900(91.8)	979(99.9)	10.8	PCU-CS2	50	55°
59.1				911(92.9)		11.2			60°
58.3			299(30.5)	922(94.0)		11.6			65°
57.6			226(23.1)	916(93.4)		980(100.0)			12.0

Order Type - Code-Size(W)-Θ
Example - PCU-CS2-50-60



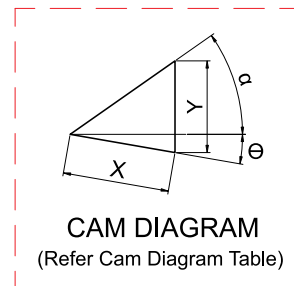
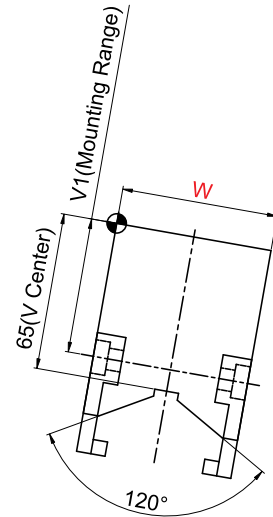
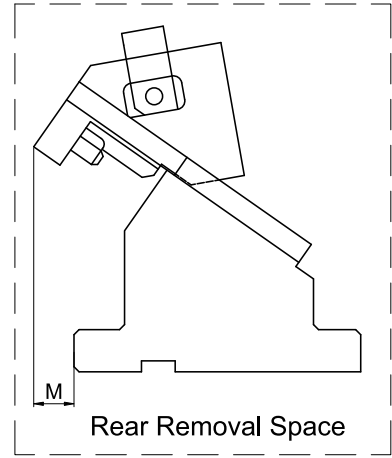
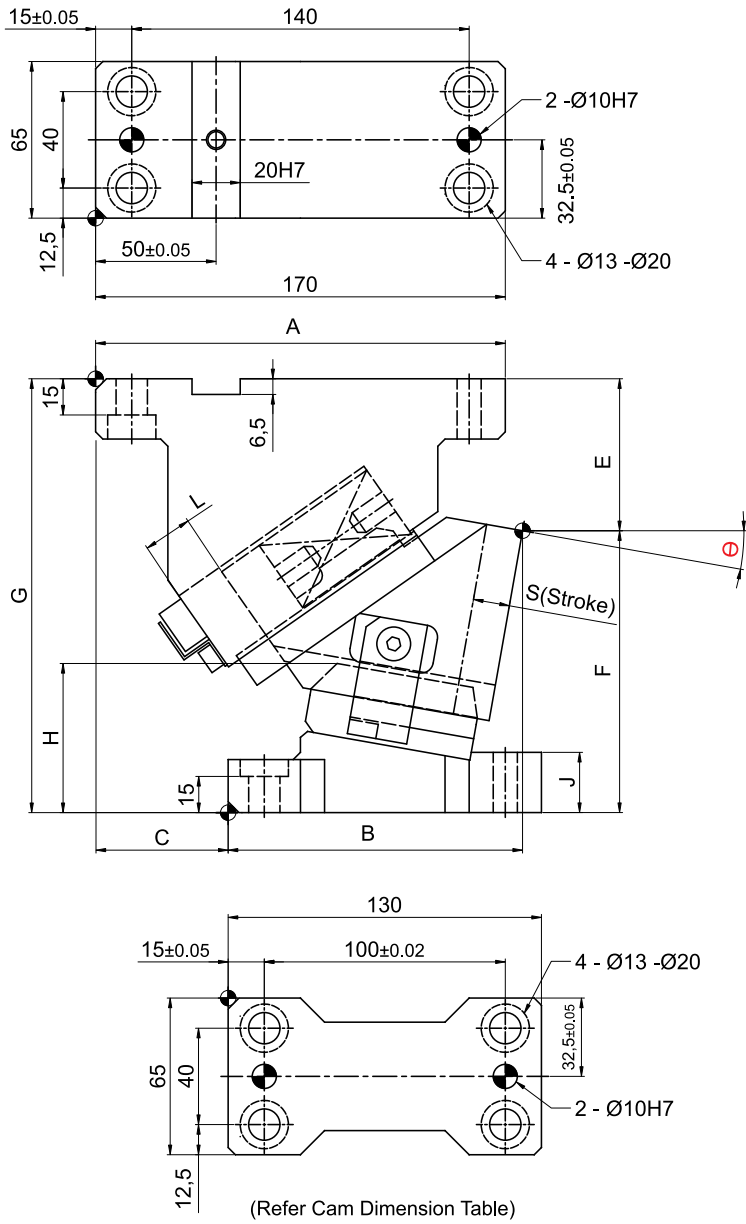
Alternations -

Option Code(OC)	Specifications
K	Dedicated key is Attached.(it is not assembled to the main unit)
N12	The Dowel Pin holes for the cam holder and cam driver are changed to Ø12H7
SC	The mount surface is extended forward in the range of 1 to 60 mm (in the increments of 1 mm)
WC	The mount width is changed to 65.



Order Type:- CODE-SIZE(W)-Θ-OC
Example:- PCU-CS2-50-60-K

► Cam Unit - PCU-CS2-65-(00-45)



► **Cam Unit - PCU-CS2-65-(00-45)**

Cam Dimensions													Cam Diagram		
W	Θ	A	B	C	E	F	G	H	J	L	V1	M	X	Y	α
65	00°	170.00	110.00	60	53.00	127.00	180	59.5	33	21.2	65	7	15	15	45°
	05°	171.41	116.41	55	60.27	119.73		59.0	25	19.6		13	15.1	13.9	40°
	10°	177.16	122.16		63.06	116.94		63.5		18.3		20	15.2	13.1	35°
	15°	177.20	127.2	50	66.33	113.67		67.9	22	17.3		25	15.5	12.7	30°
	20°	176.51	136.51	40	70.01	109.99		72.2		17.1		30	16.5	12.9	25°
	25°	172.94	137.94	35	75.64	104.36		74.9	16.6	31		17.1	14.5	15°	
	30°	177.78	147.78	30	78.32	101.68		80.7				16.5	35		18.5
	35°	173.29	153.29	20	83.25	96.75		84.5	100.9	23.3				19.6	15.5
	40°	170.78	160.78	10	82.44	97.56		96				17.9	17.9	21.5	15.2
	45°	165.50	163	2.5	86.51	93.49		100.9	23.3	17.9					

Spring Force									
Slide stroke S	Working force KN (tonf)		Spring load N (kgf)			Total weight kg	Catalog No.	W	Θ
	Standard Working force	Max. working force	Preload	5mm before bottom dead center	Max. load				
15.0	19.6(2.0)	39.2(4.0)	289(29.5)	888(90.6)	1190(121.3)	9.5	PCU-CS2	65	00°
15.1			357(36.4)	914(93.2)		9.3			05°
15.2			350(35.7)	939(95.7)	1226(125.0)	9.0			10°
15.5			398(40.5)	958(97.7)		8.8			15°
16.5			407(41.5)	977(99.6)		8.6			20°
17.1				987(100.6)		8.5			25°
18.5			431(44.0)	1011(103.1)		8.3			30°
19.6				1025(104.5)		8.3			35°
21.5			436(44.4)	1044(106.5)		8.1			40°
23.3				1059(107.9)		8.1			45°

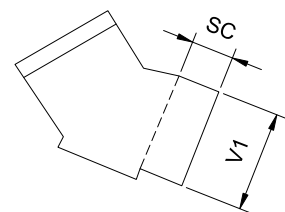
Order Type - Code-Size(W)-Θ
Example - PCU-CS2-65-00



Alternations-

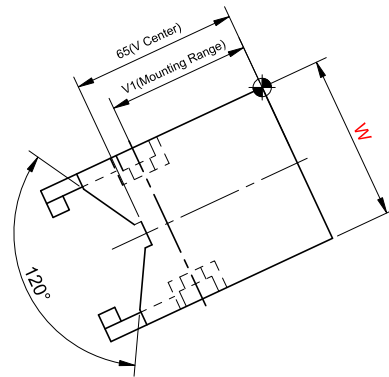
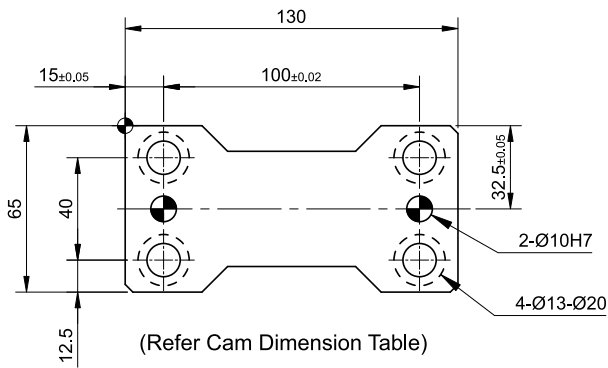
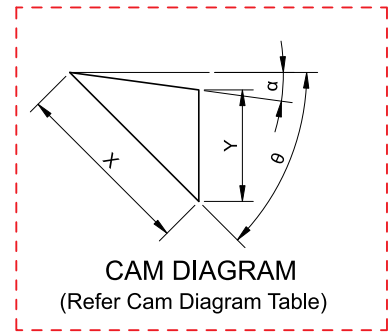
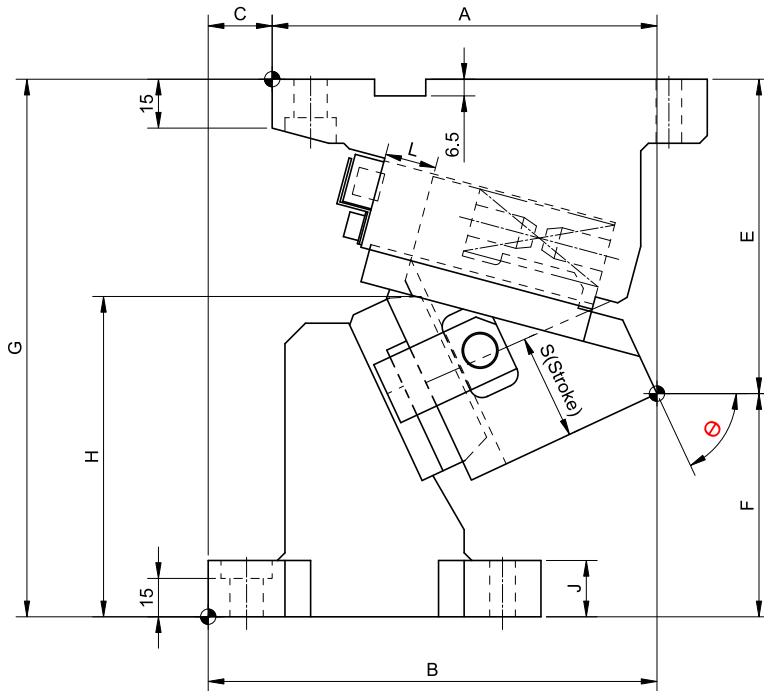
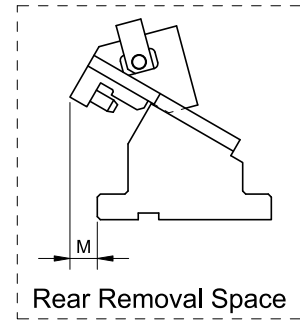
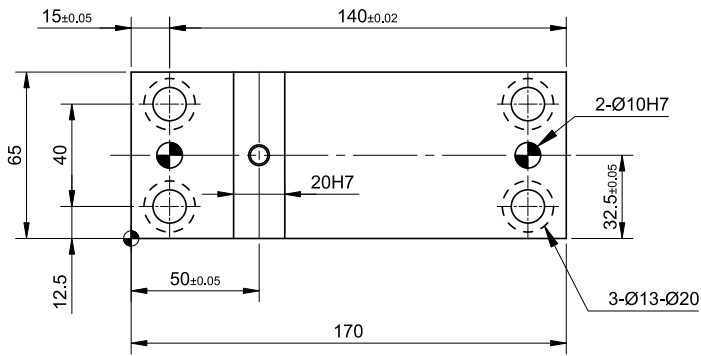
Option Code(OC)	Specifications
K	Dedicated key is Attached. (it is not assembled to the main unit)
SC	The mount surface is extended forward in the range of 1 to 60 mm (in the increments of 1 mm)

Order Type:- Code-Size(W)-Θ-OC
Example:- PCU-CS2-65-00-K



SC

► Cam Unit - PCU-CS2-65-(50-70)



► **Cam Unit - PCU-CS2-65-(50-70)**

Cam Dimension													Cam Diagram		
W	Θ	A	B	C	E	F	G	H	J	L	V1	M	X	Y	α
65	50°	165.41	170.41	5	96.79	93.21	190	111.1	22	17.1	65	37	26.5	18.8	5°
	55°	159.51	169.51	10	99.89	90.11		115.3				42	29.7	22.8	
	60°	156.68	176.68	20	120.78	89.22	210	129.1	18.1	63	55	46	35	25.6	15°
	65°	150.33	175.33	25	122.80	87.2		129.4				52	41.4	32.8	
	70°	146.45	178.45	32	131.68	78.32		128.5				51.1	43.4		

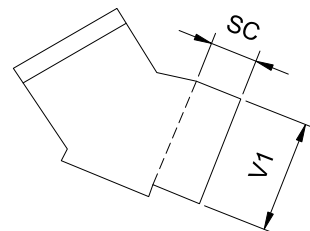
Spring Force									
Slide stroke S	Working force KN (tonf)		Spring load N (kgf)			Total weight kg	Catalog No.	W	Θ
	Standard Working force	Max. working force	Preload	5mm before bottom dead center	Max. load				
26.5	19.6(2.0)	39.2(4.0)	407(41.5)	1073(109.4)	1226(125.0)	8.4	PCU-CS2	65	50°
29.7				1087(110.9)		8.4			55°
35.0		359(36.6)		1102(112.3)		9.3			60°
41.4				1121(114.3)		9.3			65°
51.1				1140(116.2)		9.5			70°

Order Type - Code-Size(W)-Θ
Example - PCU-CS2-65-50



Alternations-

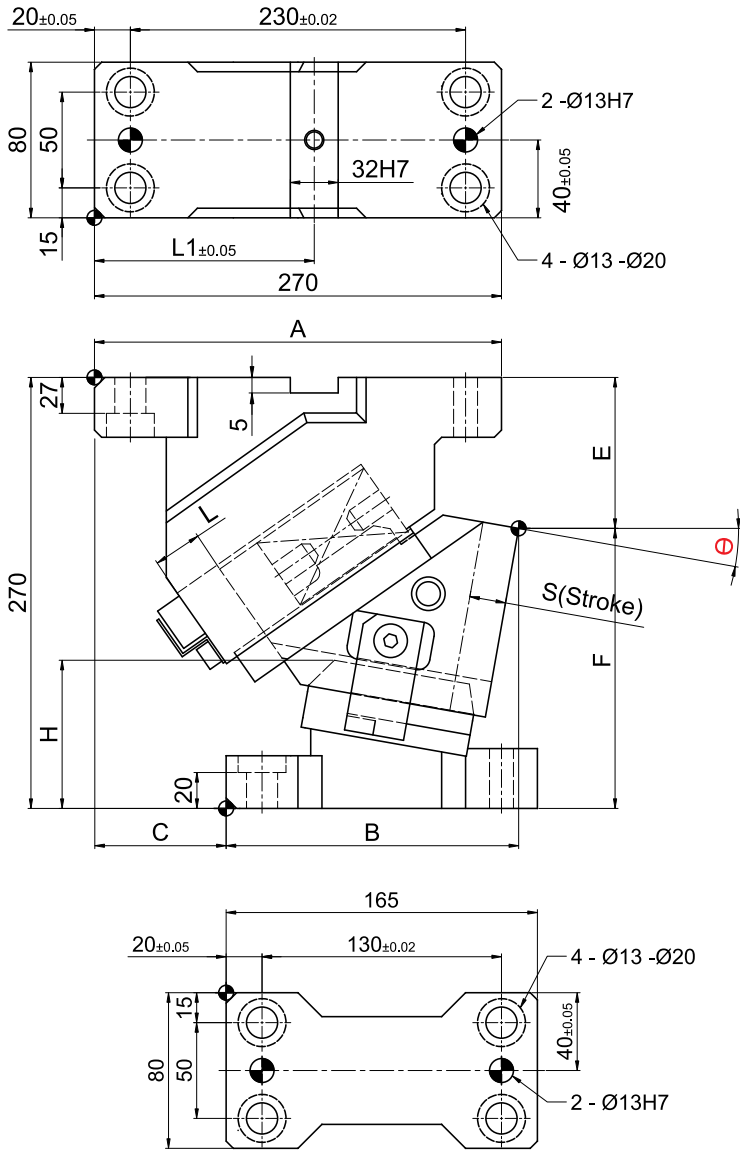
Option Code(OC)	Specifications
K	Dedicated key is Attached. (it is not assembled to the main unit)
SC	The mount surface is extended forward in the range of 1 to 60 mm (in the increments of 1 mm)



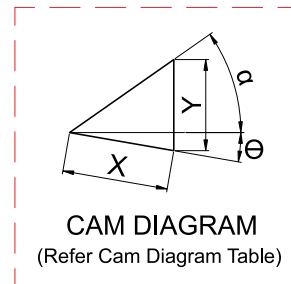
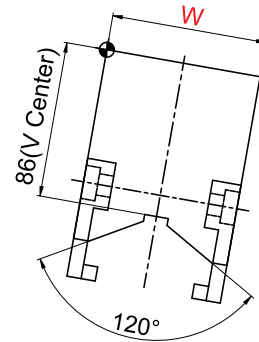
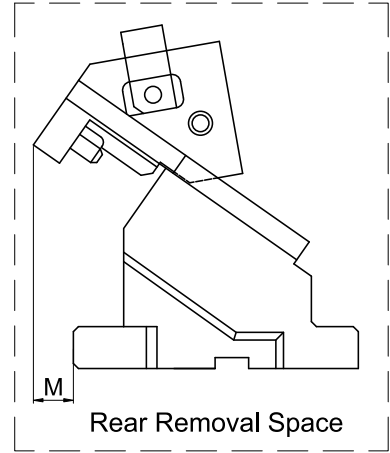
SC

Order Type:- Code-Size(W)-Θ-OC
Example:- PCU-CS2-65-50-K

► Cam Unit - PCU-CS2-80-(00-55)



(Refer Cam Dimension Table)



► **Cam Unit - PCU-CS2-80-(00-55)**

Cam Dimension										Cam Diagram			
W	Θ	A	B	C	E	F	H	L	L1	M	X	Y	α
80	00°	260.00	160.00	100	99.00	171.00	83.0	50	130	12	32.1	38.3	50°
	05°	272.93	172.93		109.39	160.61	83.8		150	17	38.4	35.5	40°
	10°	279.92	179.92		120.43	149.57	84.6				38.9	38.9	
	15°	285.93	185.93		132.04	137.96	85.3				39.7	42.4	
	20°	285.90	195.9	90	129.12	140.88	100.9				27	46.1	
	25°	289.80	199.8		141.60	128.4	101.5		47.8	45.2			
	30°	282.59	207.59		75	134.36	135.64		121.9	36		54.3	44.2
	35°	284.27	209.27	147.32		122.68	122.3		57.4		50		
	40°	274.80	214.8	60	140.38	129.62	142.6		45	64.3	50	10°	
	45°	274.20	214.2		153.44	116.56	142.7			69.6	57.9		
	50°	262.46	227.46	35	151.39	118.61	157.8		57	77.8	59.6	0°	
	55°	259.60	224.6		164.14	105.86				87.2	71.4		

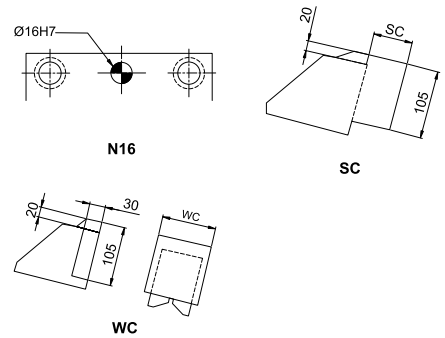
Spring Force									
Slide stroke S	Working force KN (tonf)		Spring load N (kgf)			Total weight kg	Catalog No.	W	Θ
	Standard Working force	Max. working force	Preload	5mm before bottom dead center	Max. load				
32.1	39.2(4.0)	78.5(8.0)	270(27.5)	1409(143.7)	1620(165.2)	25.9	PCU-CS2	80	00°
38.4				1445(147.3)		26.3			05°
38.9				1447(147.6)		26.6			10°
39.7				1450(147.8)		25.1			15°
46.1				1474(150.3)		25.3			20°
47.8				1480(150.9)		25.3			25°
54.3				1496(152.5)		23.2			30°
57.4				1501(153.1)		23.4			35°
64.3				1515(154.5)		22.4			40°
69.6				1523(155.3)		22.4			45°
77.8				1534(156.4)		21.6			50°
87.2				1542(157.2)		21.7			55°

Order Type - Code-Size(W)-Θ
Example - PCU-CS2-80-50



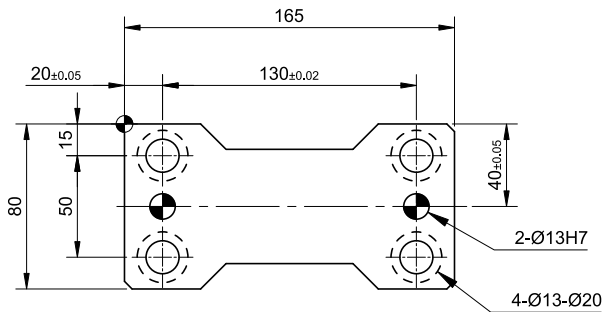
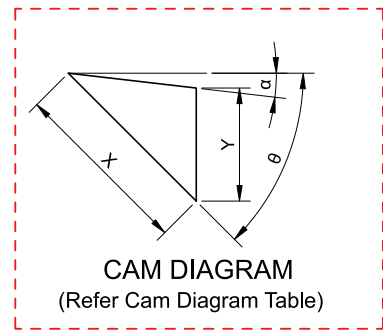
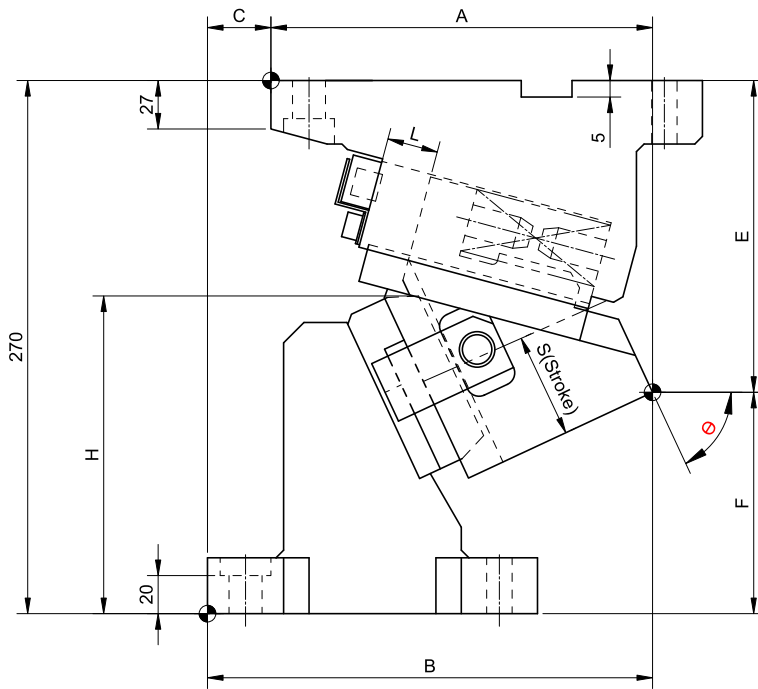
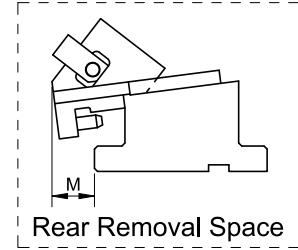
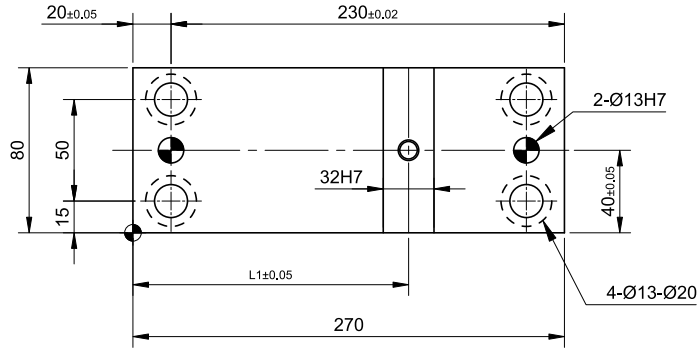
Alternations-

Option Code(OC)	Specifications
K	Dedicated key is Attached. (it is not assembled to the main unit)
N16	The Dowel Pin holes for the cam holder and cam driver are changed to ø16H7
SC	Mount surface is extended forward in the range of 0 to 60 mm (in the increments of 1 mm)
WC	Mount width is changed to 100 or 120,WC100 or WC120 to be ordered.

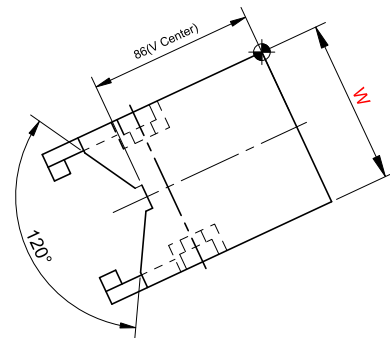


Order Type:- Code-Size(W)-Θ-OC
Example:- PCU-CS2-80-50-K

► Cam Unit - PCU-CS2-80-(60-70)



(Refer Cam Dimension Table)



► Cam Unit - PCU-CS2-80-(60-70)

Cam Dimension											Cam Diagram		
W	Θ	A	B	C	E	F	H	L	L1	M	X	Y	α
80	60°	240.64	240.64	0	176.59	93.41	157.7	50	170	75	98.5	76.6	10°
	65°	235.61	240.61	5	188.65	81.35	157.4	35		74	81.6	67.8	10°
	70°	227.83	237.83	10	195.53	74.47	157.1	30		75	67.8	76	

Spring Force									
Slide stroke S	Working force KN (tonf)		Spring load N (kgf)			Total weight kg	Catalog No.	W	Θ
	Standard Working force	Max. working force	Preload	5mm before bottom dead center	Max. load				
98.5	39.2(4.0)	78.5(8.0)	270(27.5)	1553(158.3)	1620(165.2)	23.2	PCU-CS2	80	60°
81.6			323(32.9)	1386(141.3)	1454(148.2)	23.7			65°
86.4			404(41.2)	1547(157.8)	1616(164.8)	23.9			70°

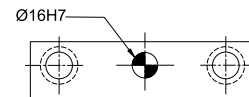
Order Type - Code-Size(W)-Θ
Example - PCU-CS2-80-65



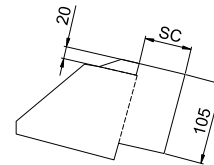
Alternations-

Option Code(OC)	Specifications
K	Dedicated key is Attached. (it is not assembled to the main unit)
N16	The Dowel Pin holes for the cam holder and cam driver are changed to ø16H7
SC	The mount surface is extended forward in the range of 0 to 60 mm (in the increments of 1 mm)
WC	The mount width is changed to 100 or 120, WC100 or WC120 to be ordered.

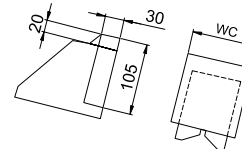
Order Type:- Code-Size(W)-Θ-OC
Example:- PCU-CS2-80-65-K



N16



SC



WC

► Cam Unit - PCU-CS2-150-(00-55)

Cam Dimension										Cam Diagram			
W	Θ	A	B	C	E	F	H	L	L1	M	X	Y	α
150	00°	280.00	160.00	120	85.00	185.00	94.0	50	100	20	32.1	38.3	50°
	05°	288.26	173.26	115	95.84	174.16					32.3	41.1	
	10°	285.54	180.54	105	102.36	167.64	98.9			41	38.9	38.9	40°
	15°	291.79	186.79		114.47	155.53	98.7				39.7	42.4	
	20°	286.97	196.97	90	122.07	147.93	103.5		135	57	46.1	40.8	30°
	25°	291.02	201.02		135.08	134.92	103.2				47.8	45.2	
	30°	283.92	213.92	70	138.40	131.6	112.8			69	54.3	44.2	20°
	35°	285.66	215.66		151.91	118.09	112.4				57.4	50	
	40°	276.20	231.20	45	155.53	114.47	121.9		170	75	64.3	50	10°
	45°	275.56	230.56		169.14	100.86	121.4				69.6	57.9	
	50°	263.74	238.74	25	167.65	102.35	137.0			77	77.8	59.6	0°
	55°	260.74	235.74		180.94	89.06	137.6				87.2	71.4	

Spring Force									
Slide stroke S	Working force KN (tonf)		Spring load N (kgf)			Total weight kg	Catalog No.	W	Θ
	Standard Working force	Max. working force	Preload	5mm before bottom dead center	Max. load				
32.1	88.3(9.0)	132.4(13.5)	636(64.9)	3991(407.0)	4611(470.2)	45.4	PCU-CS2	150	00°
32.3				3999(407.8)		45.9			05°
38.9				4102(418.3)		44.4			10°
39.7				4110(419.1)		44.9			15°
46.1				4182(426.4)		43.2			20°
47.8				4198(428.0)		43.7			25°
54.3				4245(432.9)		42.2			30°
57.4				4261(434.5)		42.7			35°
64.3				4301(438.6)		41.0			40°
69.6				4325(441.0)		41.4			45°
77.8				4357(444.2)		40.5			50°
87.2				4380(446.7)		40.9			55°

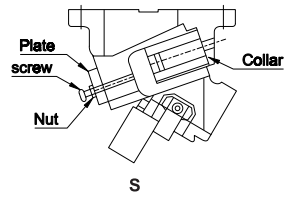
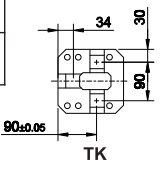
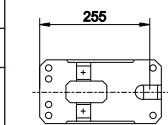
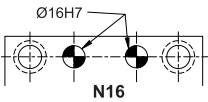
Order Type - Code-Size(W)-Θ
Example - PCU-CS2-150-00



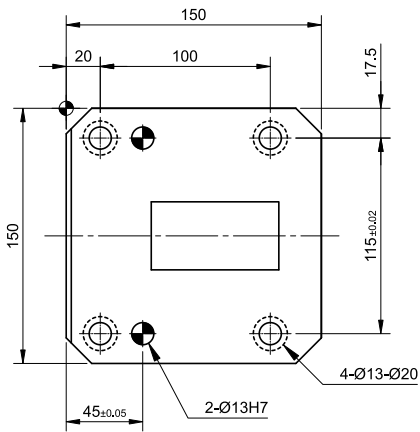
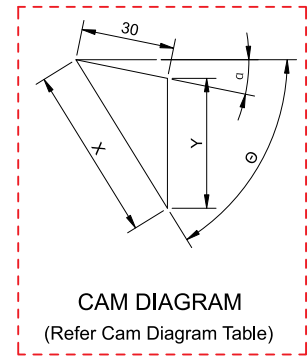
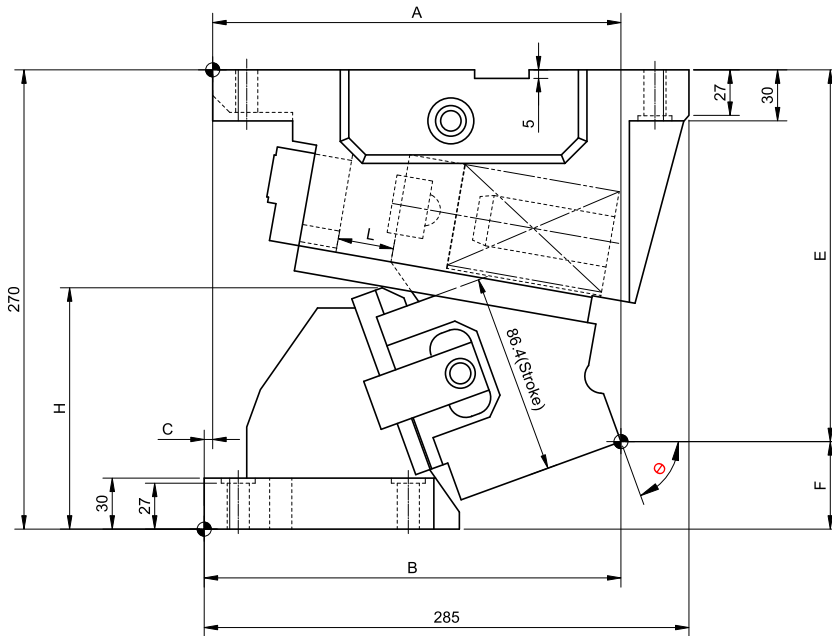
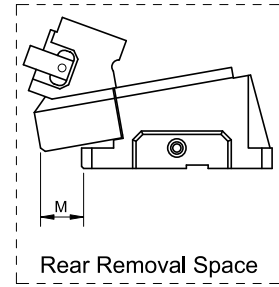
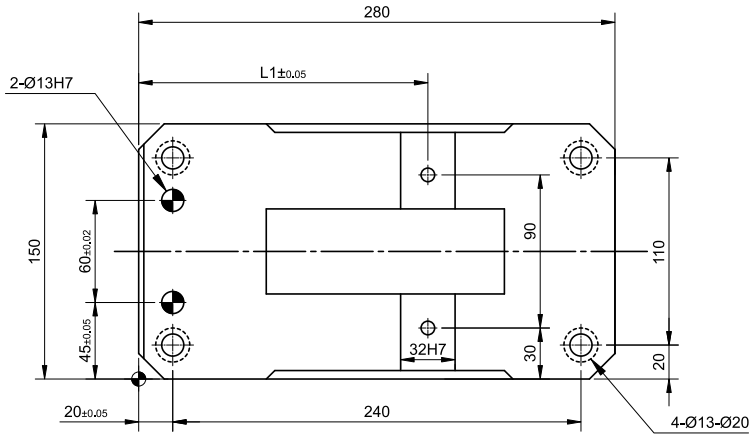
Alternations-

Option Code(OC)	Specifications
K	Dedicated key is Attached for cam driver.
N16	The Dowel Pin holes for the cam holder and cam driver are changed to ø16H7
S	Home Position Bolt / Nut / Collar are included.
TK	Dedicated key is Attached for cam holder (T-shaped) and cam driver.

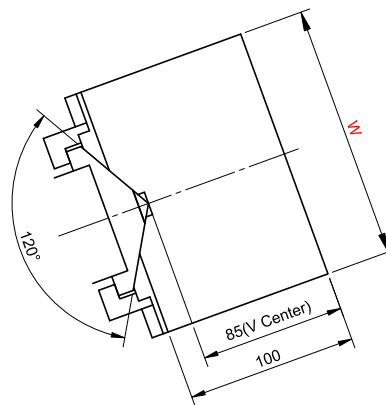
Order Type:- Code-Size(W)-Θ-OC
Example:- PCU-CS2-150-00-K



► Cam Unit - PCU-CS2-150-(60-70)



(Refer Cam Dimension Table)



► Cam Unit - PCU-CS2-150-(60-70)

Cam Dimension											Cam Diagram		
W	Θ	A	B	C	E	F	H	L	L1	M	X	Y	α
150	60°	246.60	246.60	0	193.92	76.08	138.2	50	170	100	98.5	76.5	10°
	65°	241.35	241.35		206.49	63.51	138.6	40		104	93.2	77.5	
	70°	240.01	245.01	5	218.56	51.44	141.9	30		102	86.4	76	

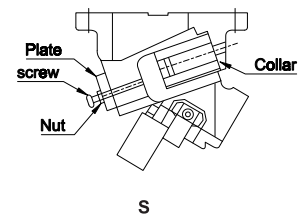
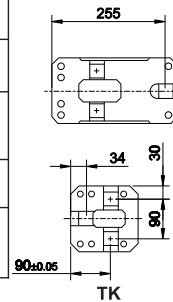
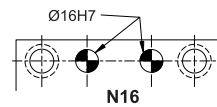
Spring Force									
Slide Stroke S	Working force KN (tonf)		Spring load N (kgf)			Total weight kg	Catalog No.	W	Θ
	Standard working force	Max. working force	Preload	5 mm before bottom dead center	Max. load				
98.5	88.3(9.0)	132.4(13.5)	636(64.9)	4412(449.9)	4611(470.2)	41.5	PCU-CS2	150	60°
93.2			1431(145.9)	4444(453.2)		42.2			65°
86.4			2226(227.0)	4476(456.4)		43.5			70°

Order Type - Code-Size(W)-Θ
Example - PCU-CS2-150-70



Alternations-

Option Code(OC)	Specifications
K	Dedicated key is Attached for cam driver.
N16	The Dowel Pin holes for the cam holder and cam driver are changed to Ø16H7
S	Home Position Bolt / Nut / Collar are included.
TK	Dedicated key is Attached for cam holder (T-shaped) and cam driver.



Order Type:- Code-Size(W)-Θ-OC
Example:- PCU-CS2-150-70-K